



# PRINS CLAUSBRUG DORDRECHT

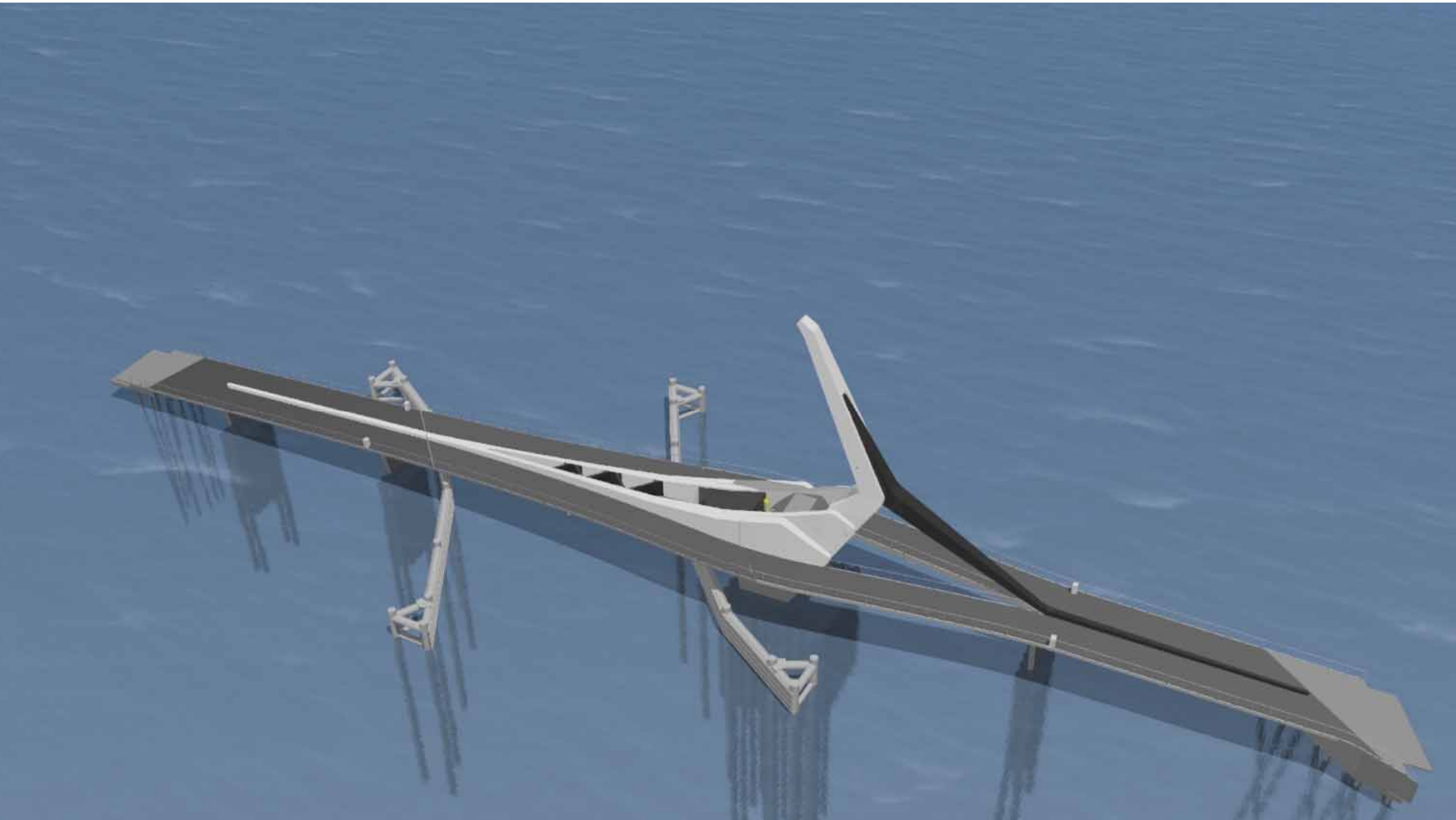
Britte van Kortenhof

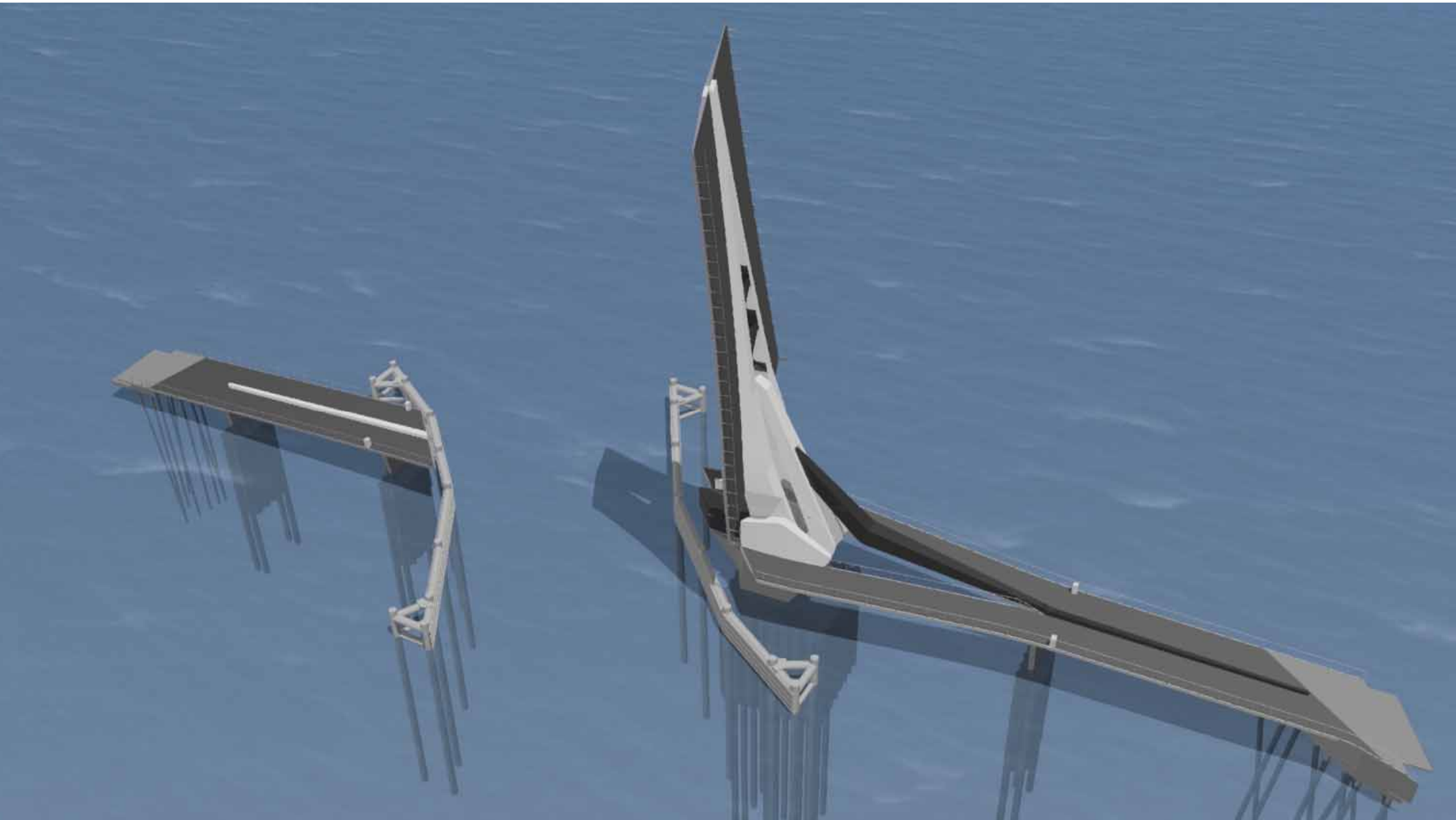
# PROJECTINFORMATIE

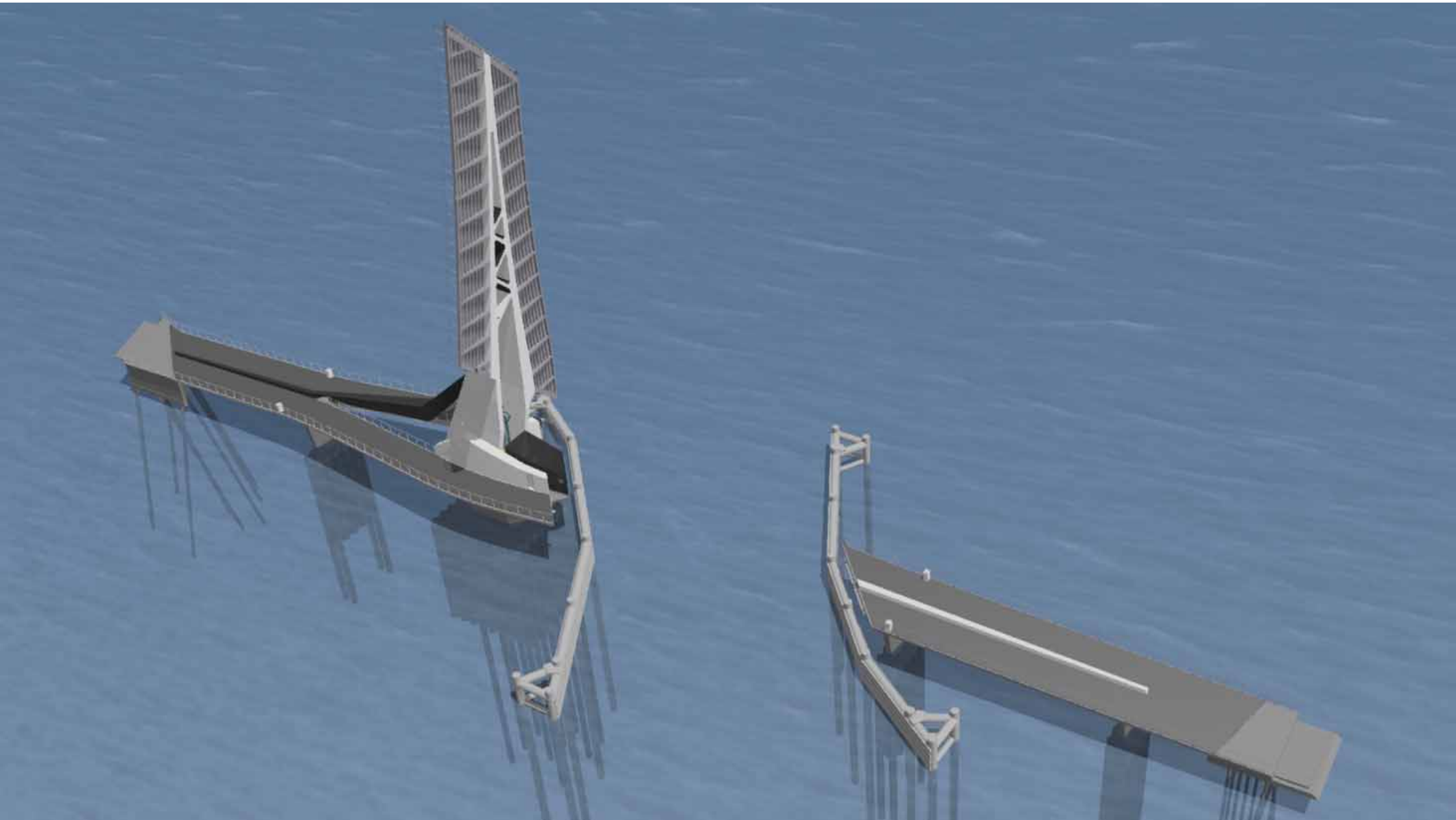
- Opdrachtgever: Gemeente Dordrecht
- Architectonisch ontwerp: Rene van Zuuk Architecten
- Ontwerpende partij: Iv-Infra
- Aannemer: Combinatie Dura Vermeer Hillebrand

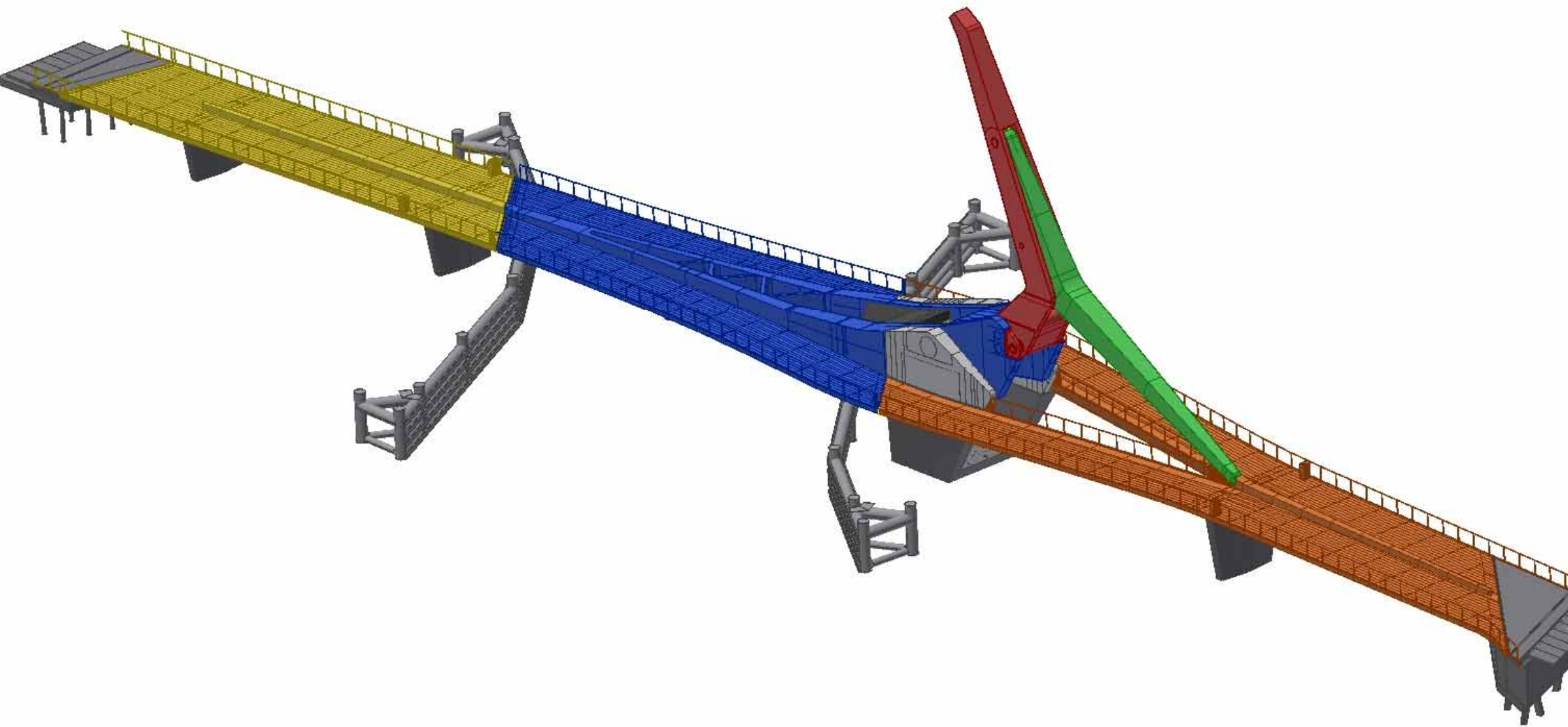


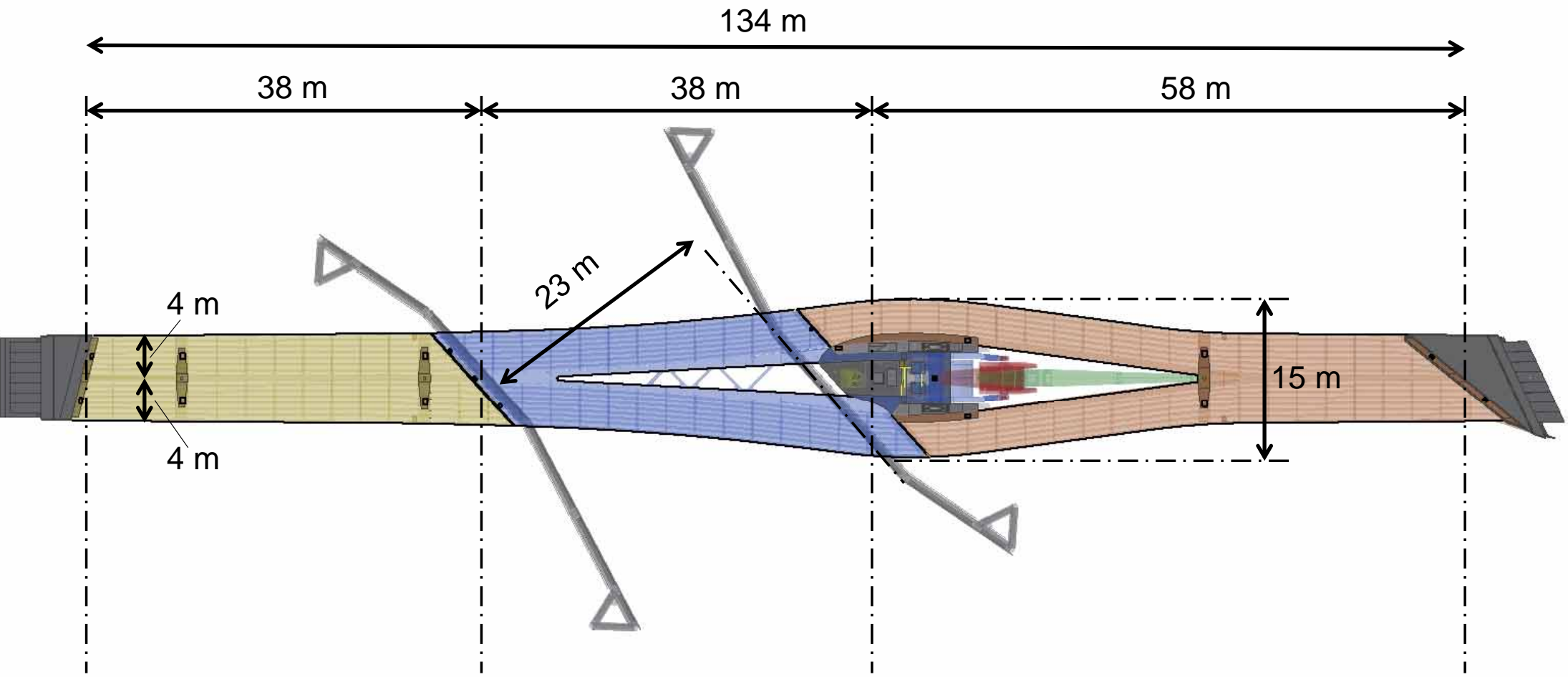










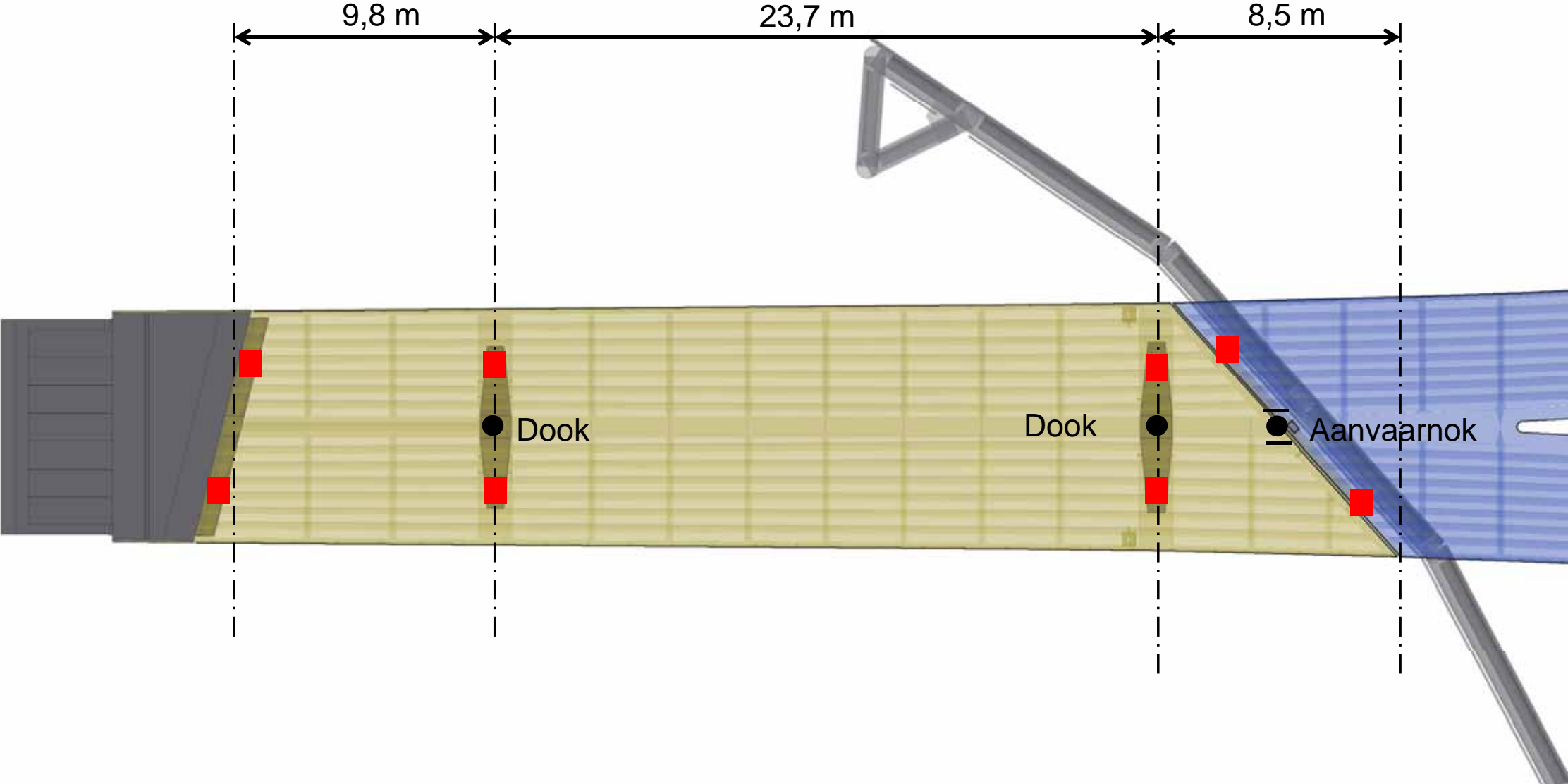




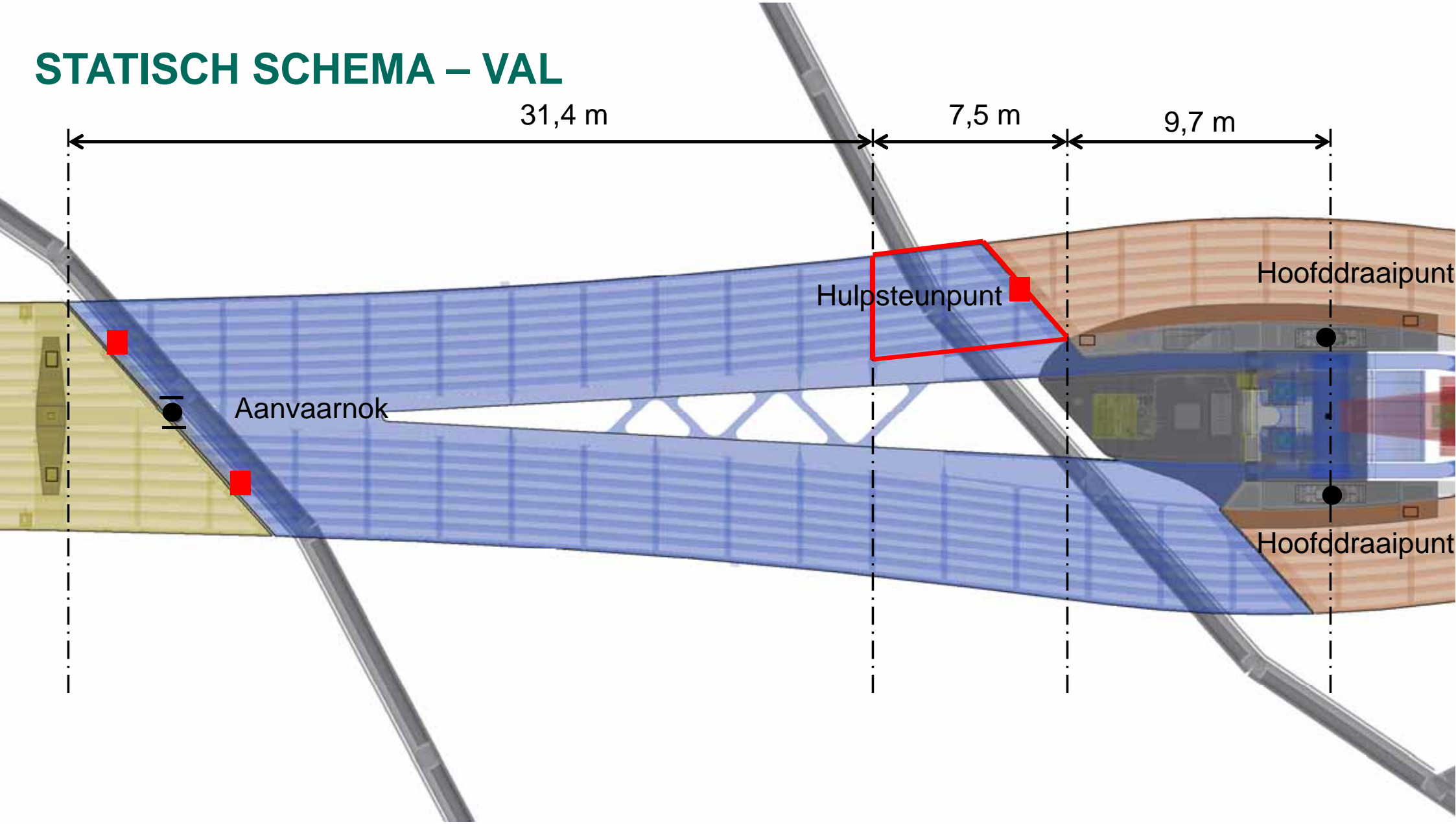
# UITDAGINGEN

- Stelsel van bewegende onderdelen
- Zeer slanke constructies en alles weggewerkt en geïntegreerd
- Nautische situatie:
  - Schuine voegen
  - Aanvaarbelasting op pijlers

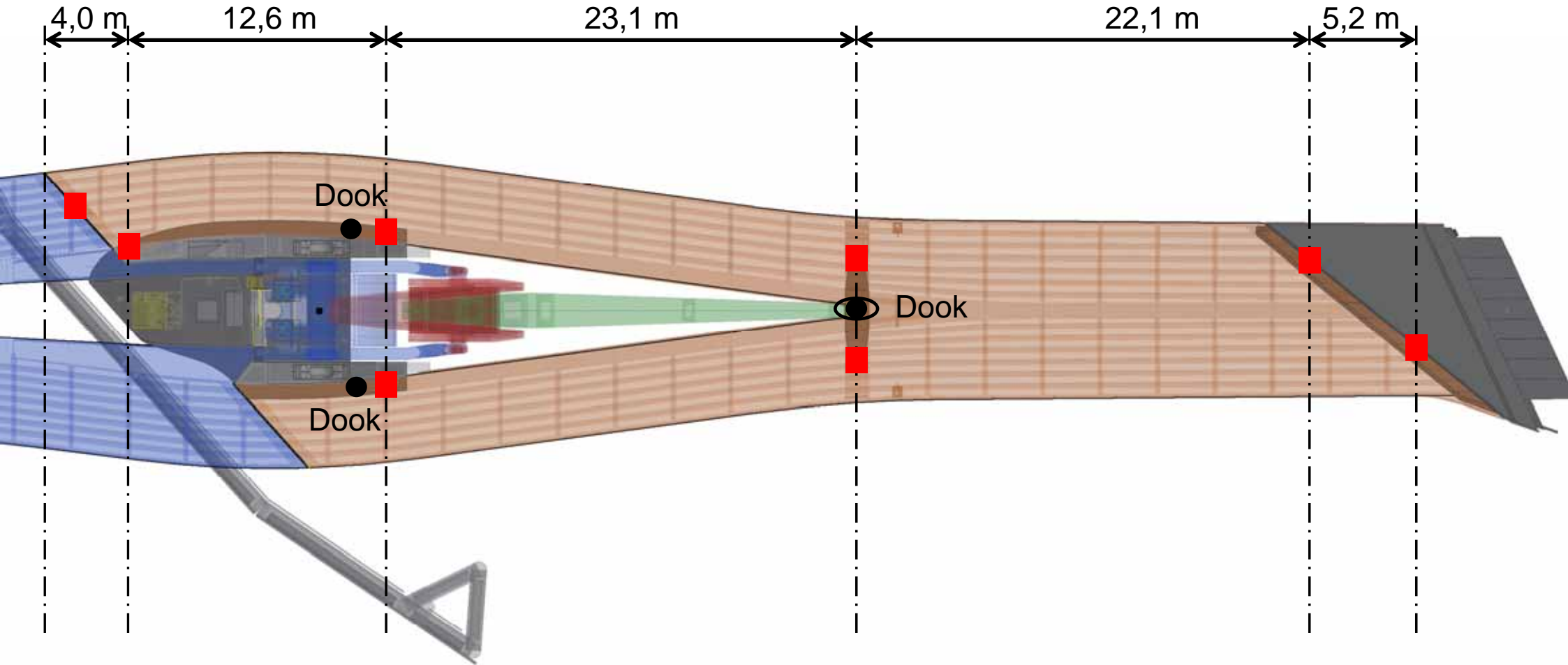
# STATISCH SCHEMA – AANBRUG WEST



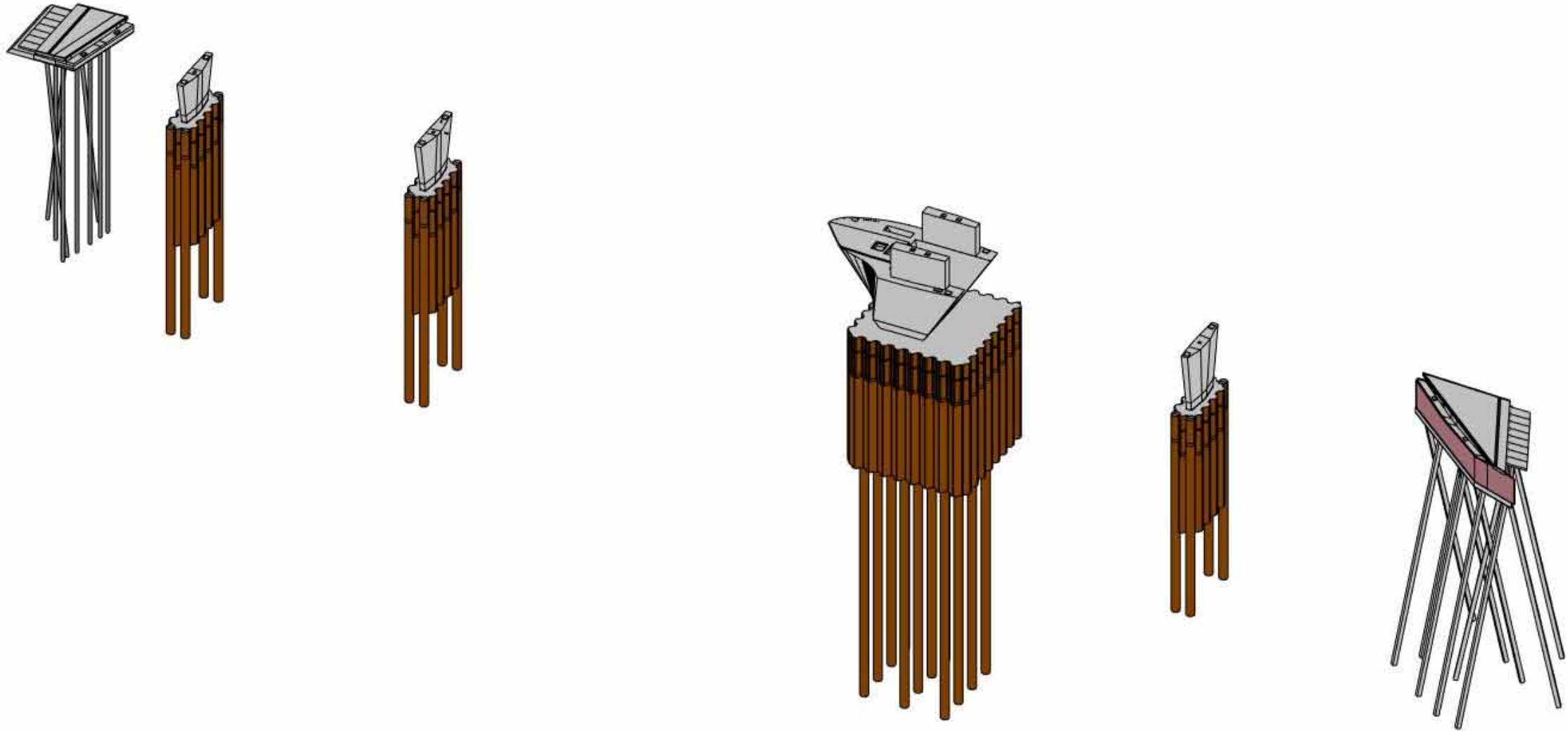
# STATISCH SCHEMA – VAL



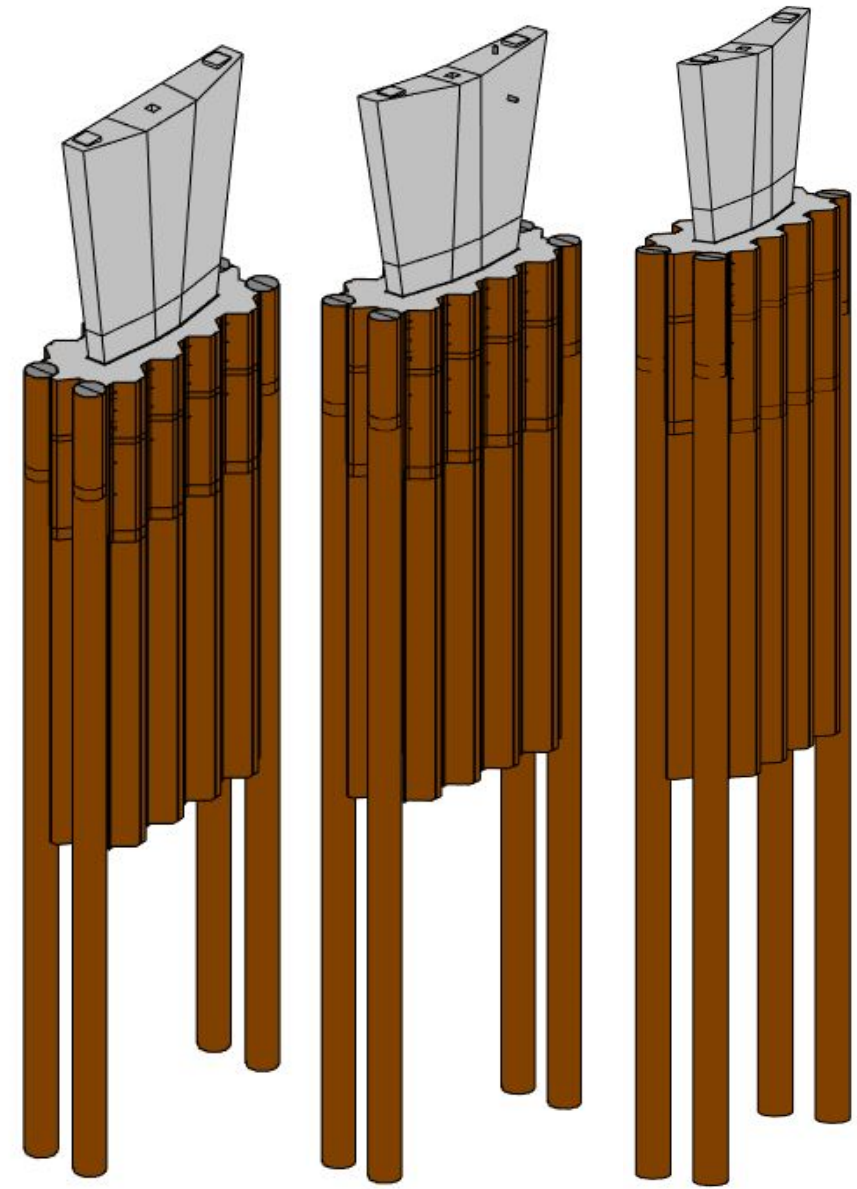
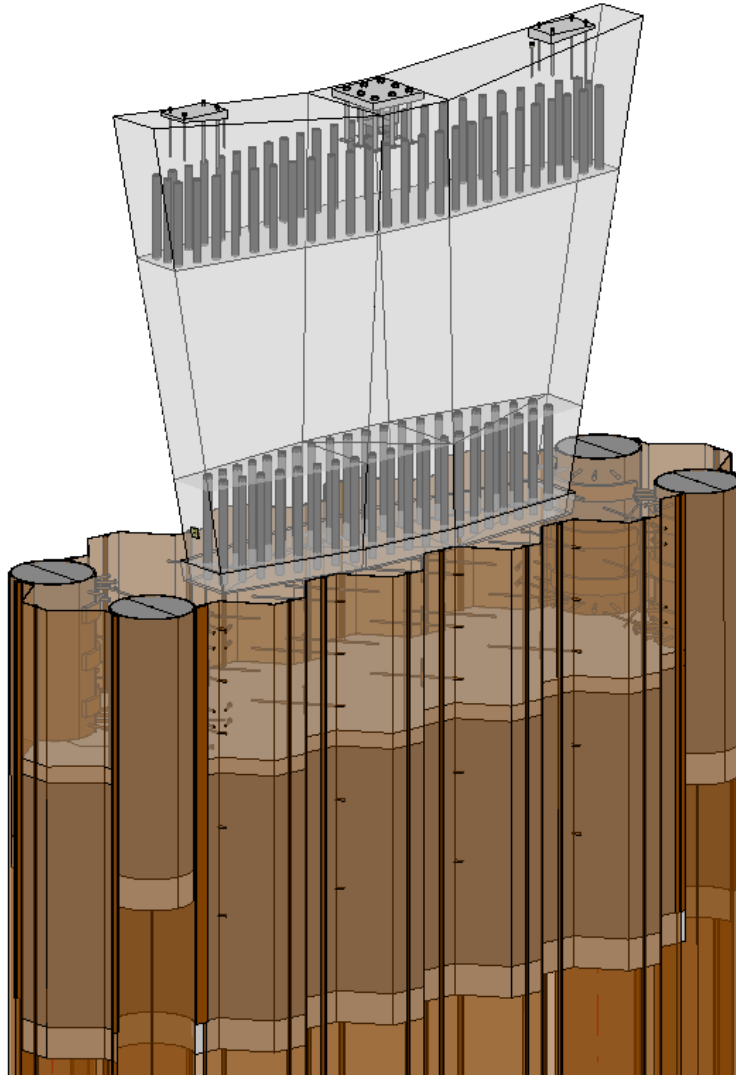
# STATISCH SCHEMA – AANBRUG OOST



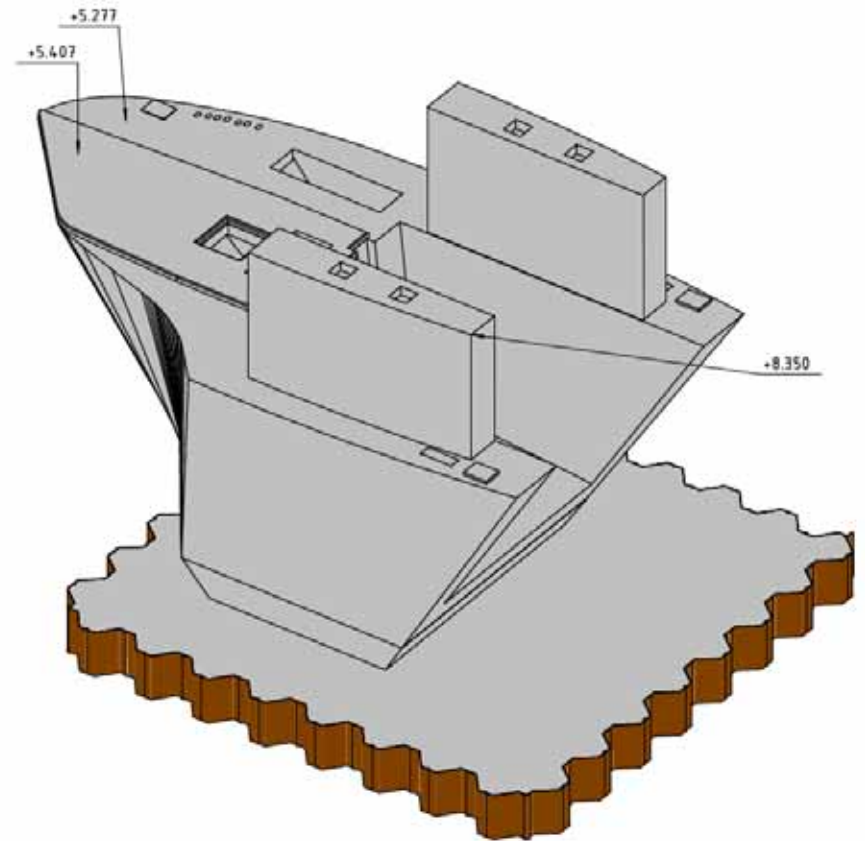
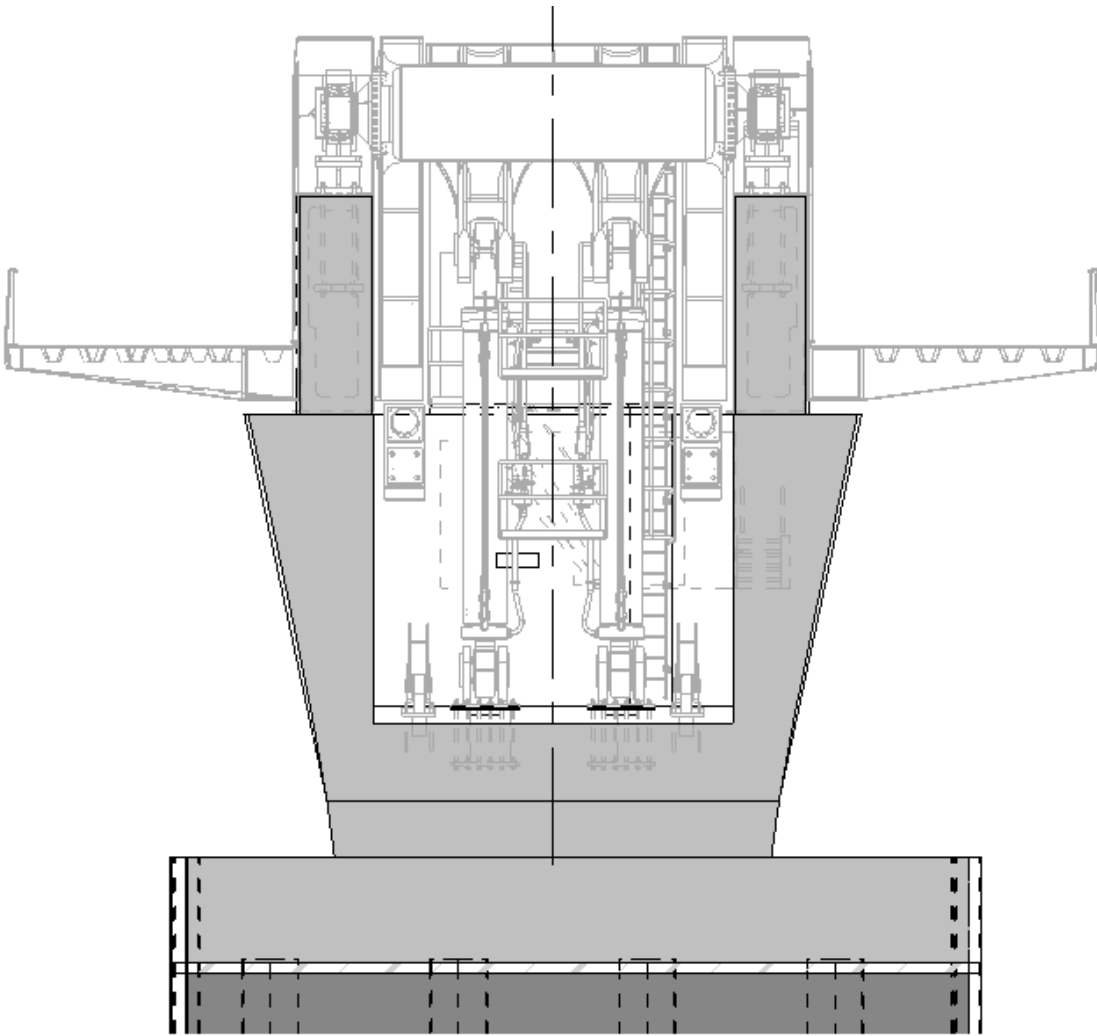
# ONDERBOUW



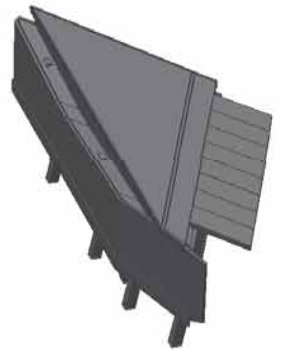
## PIJLERS 1, 2 EN 4



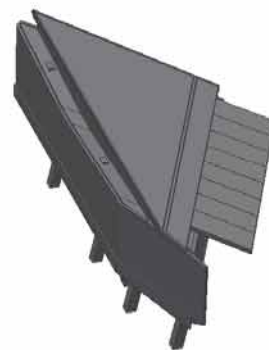
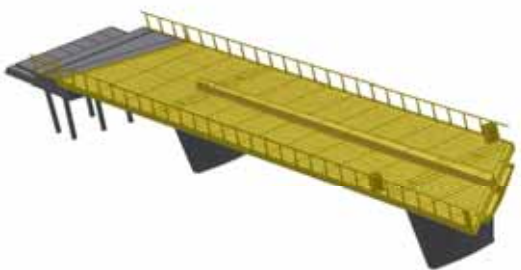
## PIJLER 3 - SOKKEL

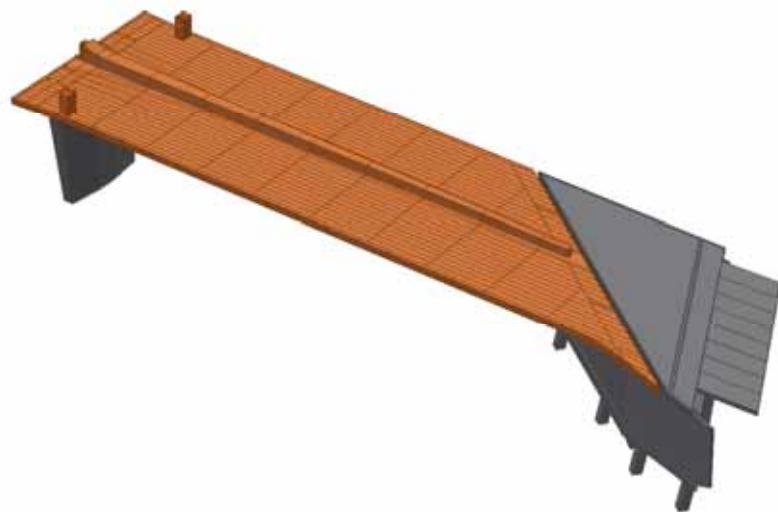
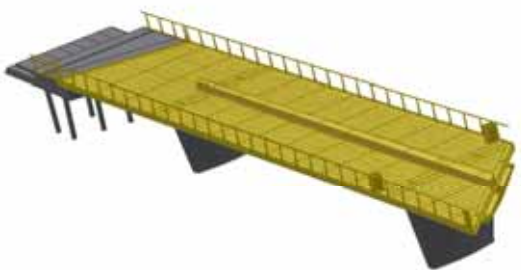


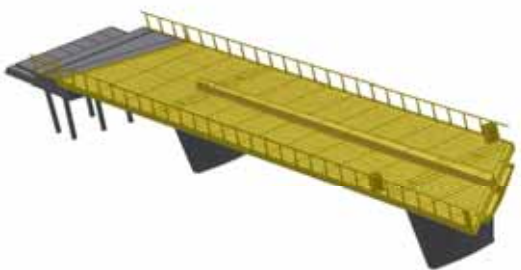
# BOUWWIJZE

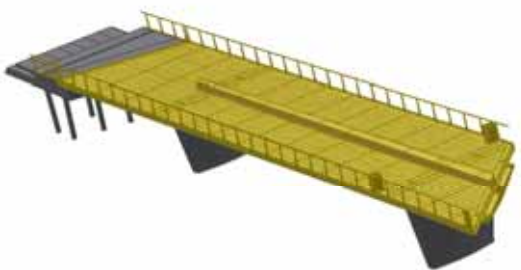


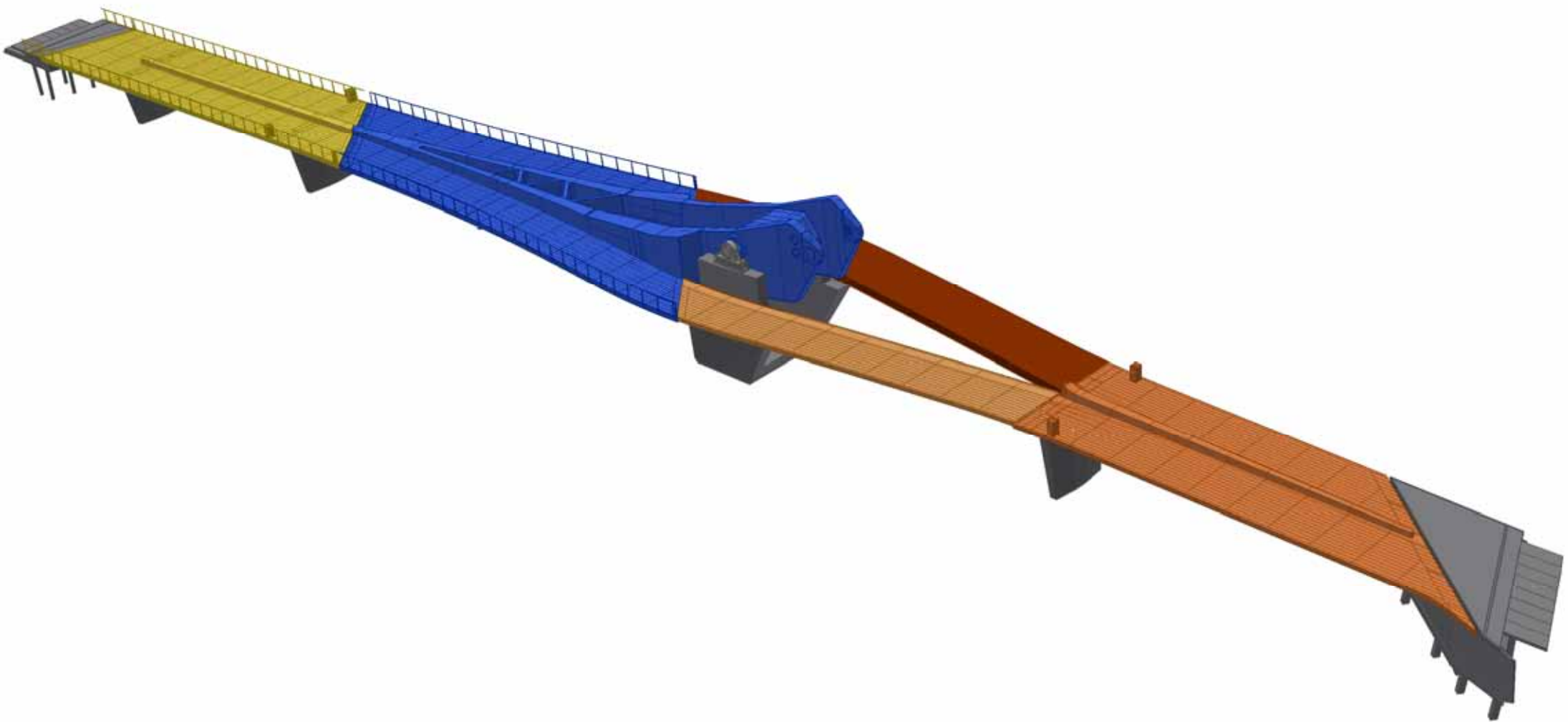


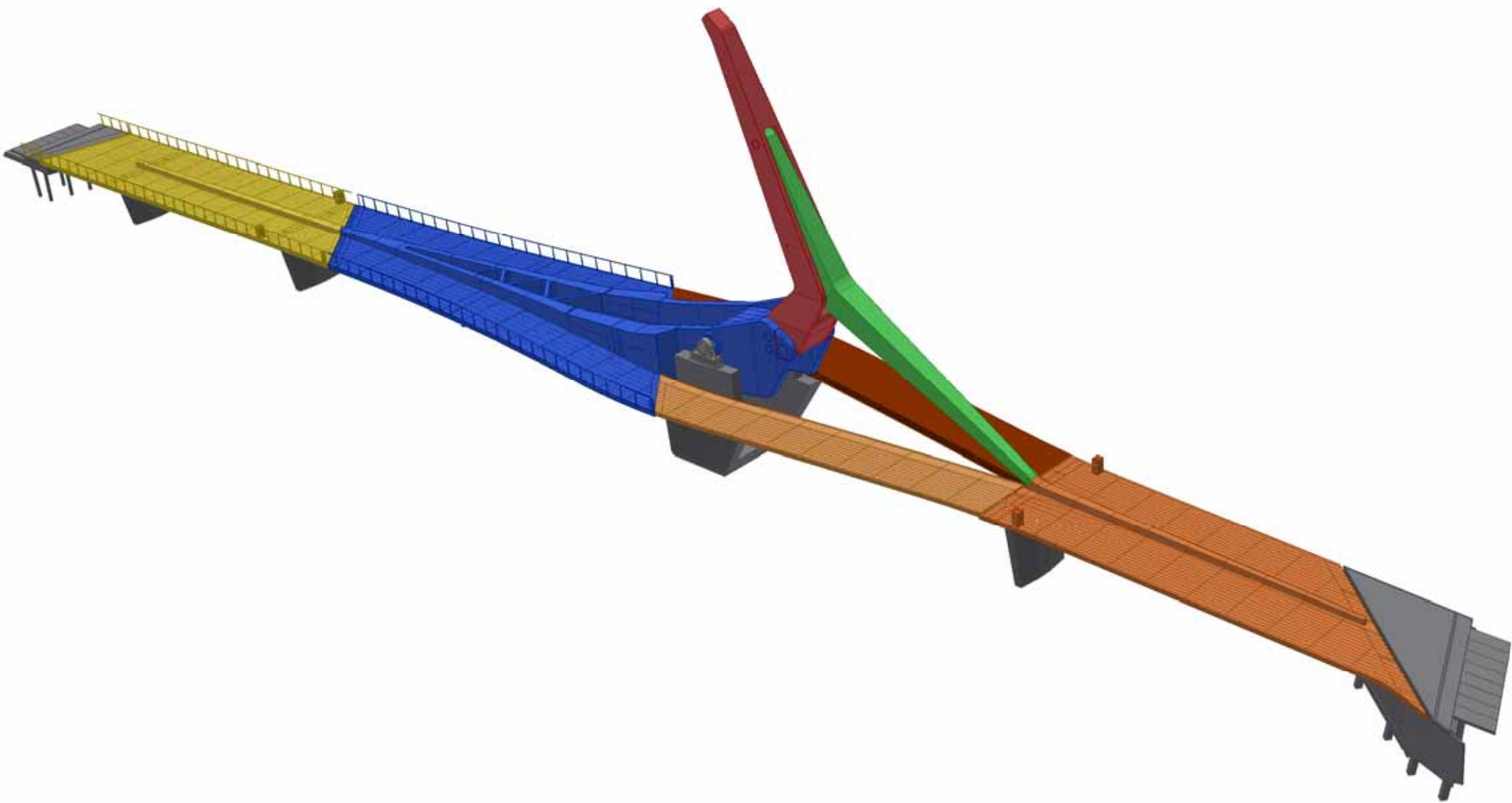


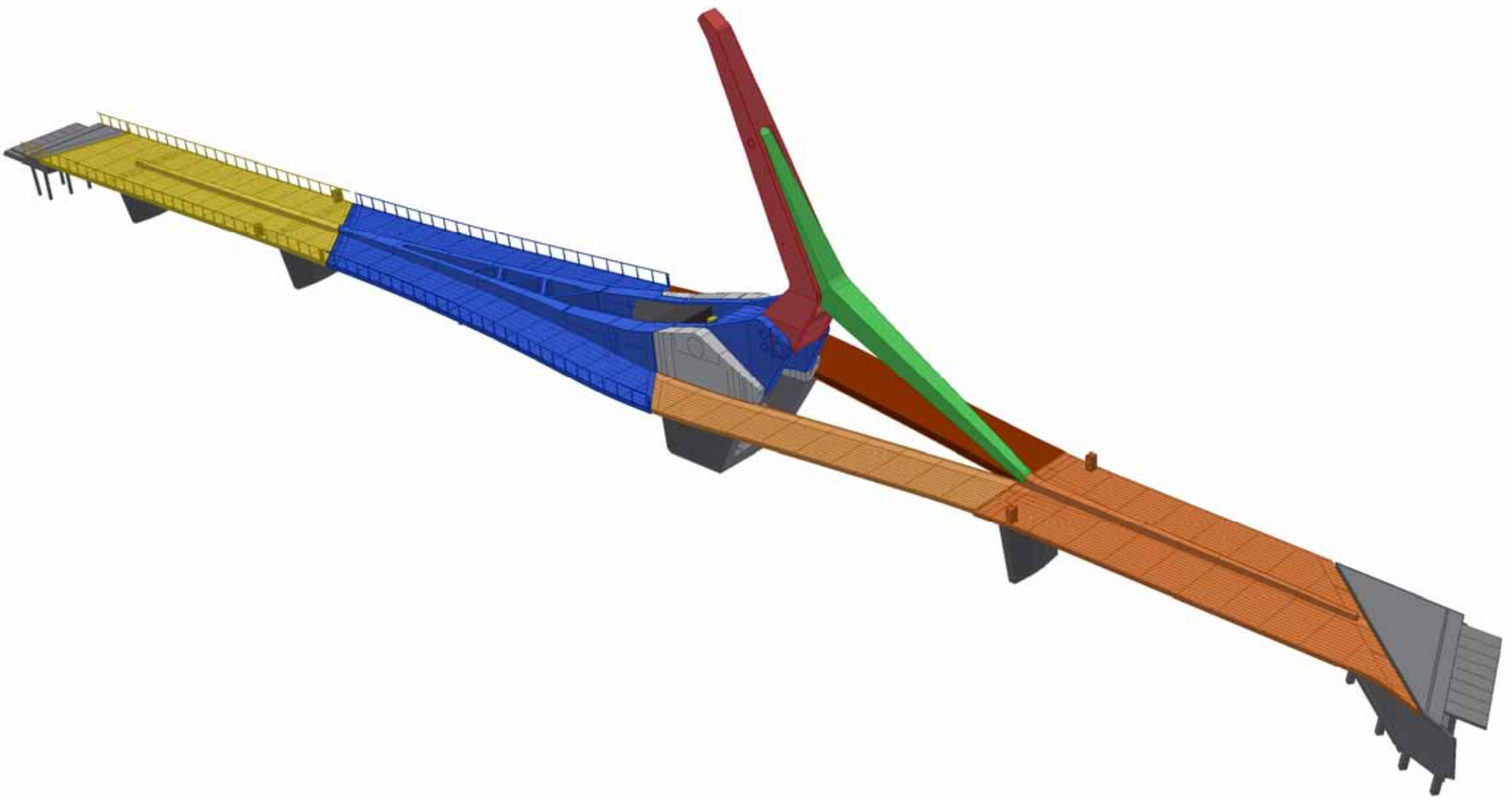










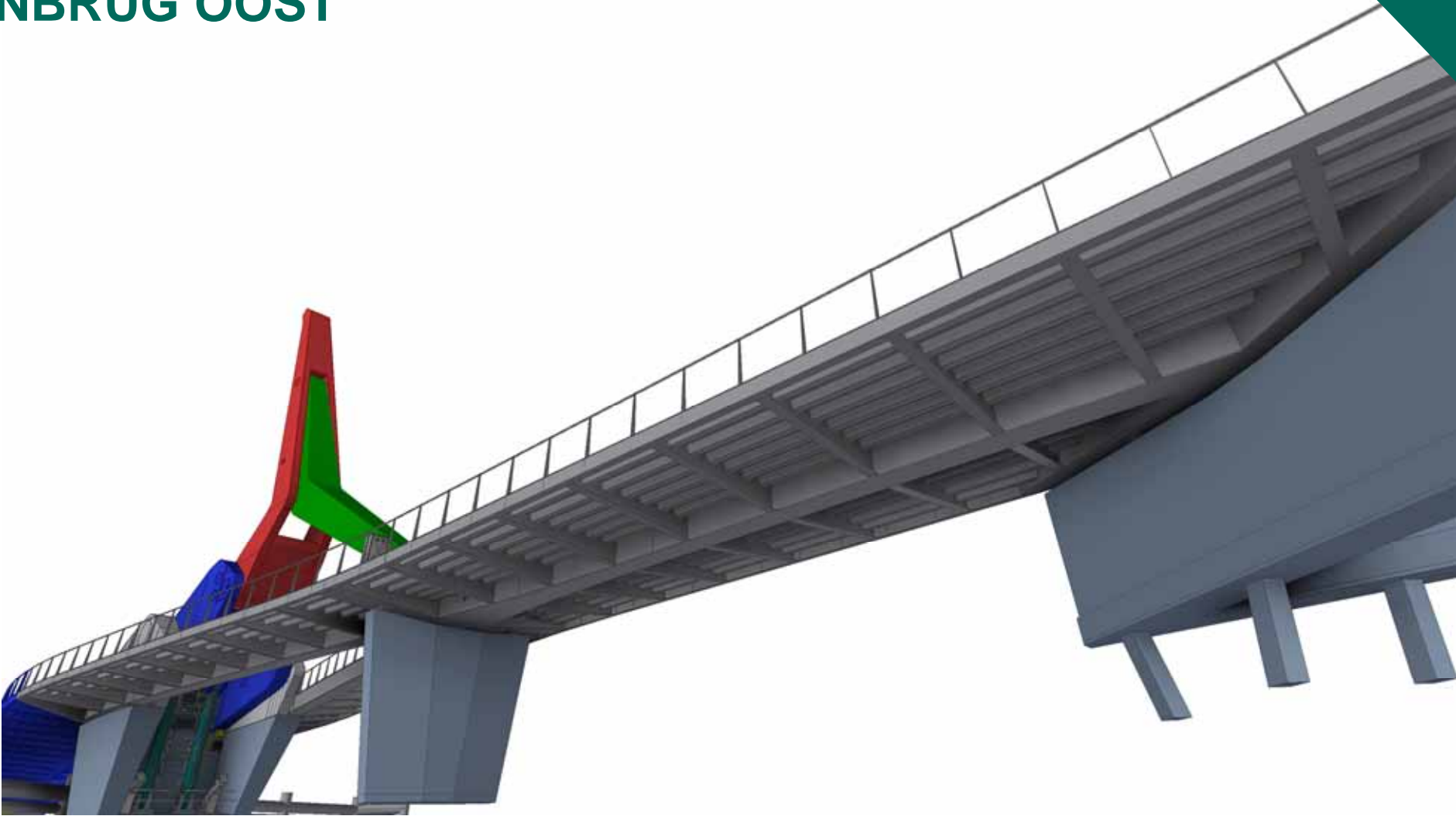


# BOVENBOUW – AANBRUG WEST





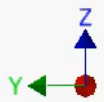
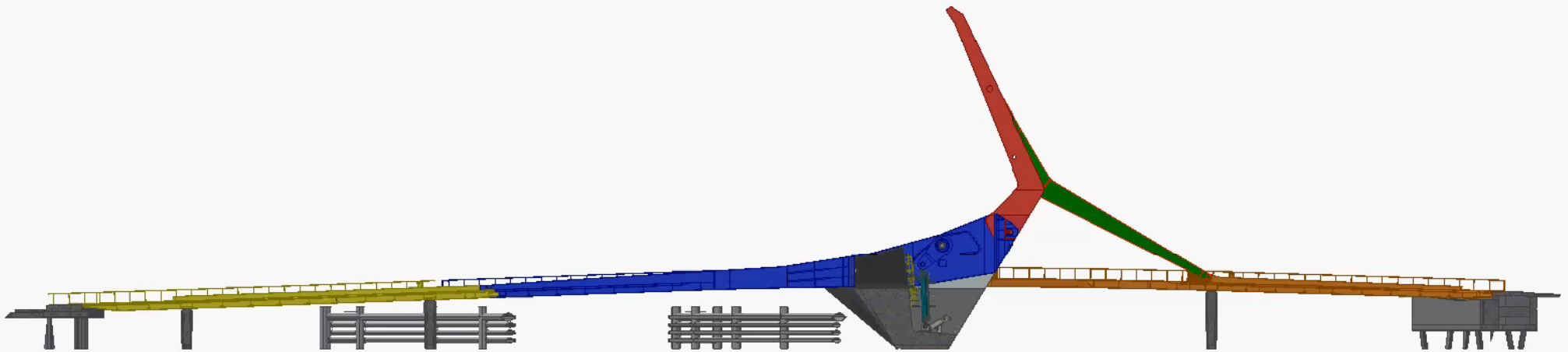
# AANBRUG OOST



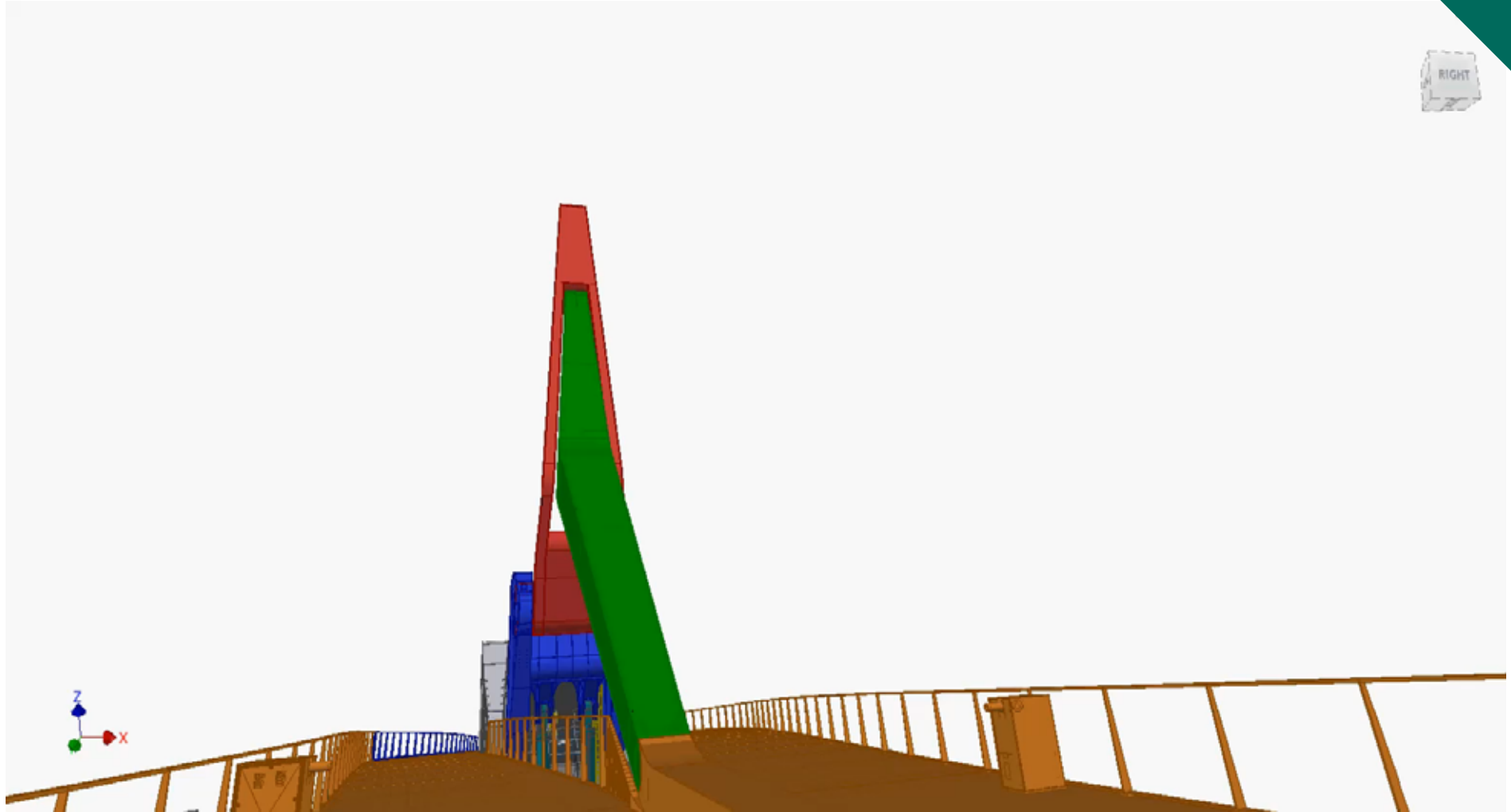
# BEWEEGBAAR DEEL



FRONT



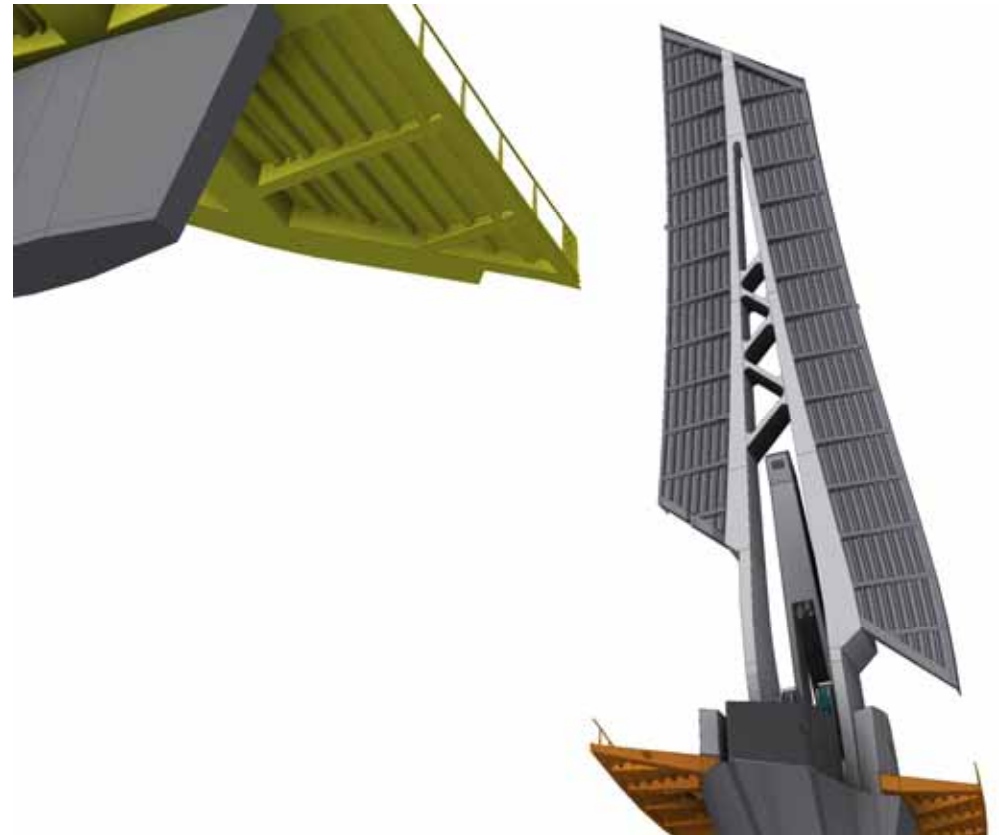
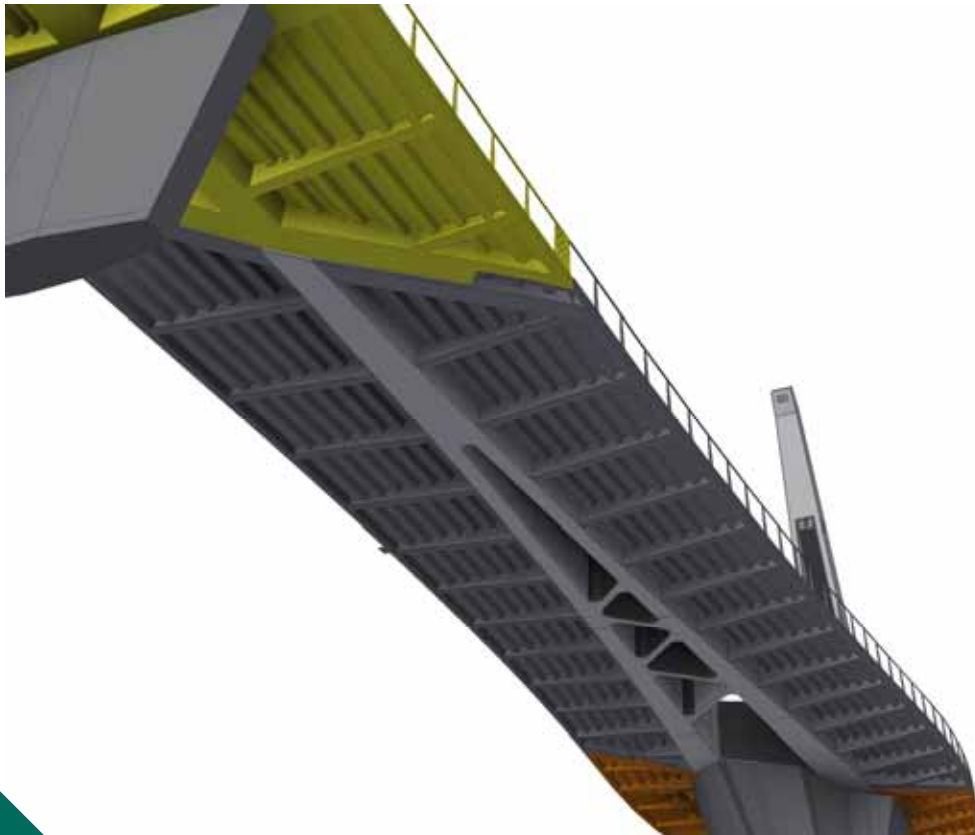
# BEWEEGBAAR DEEL



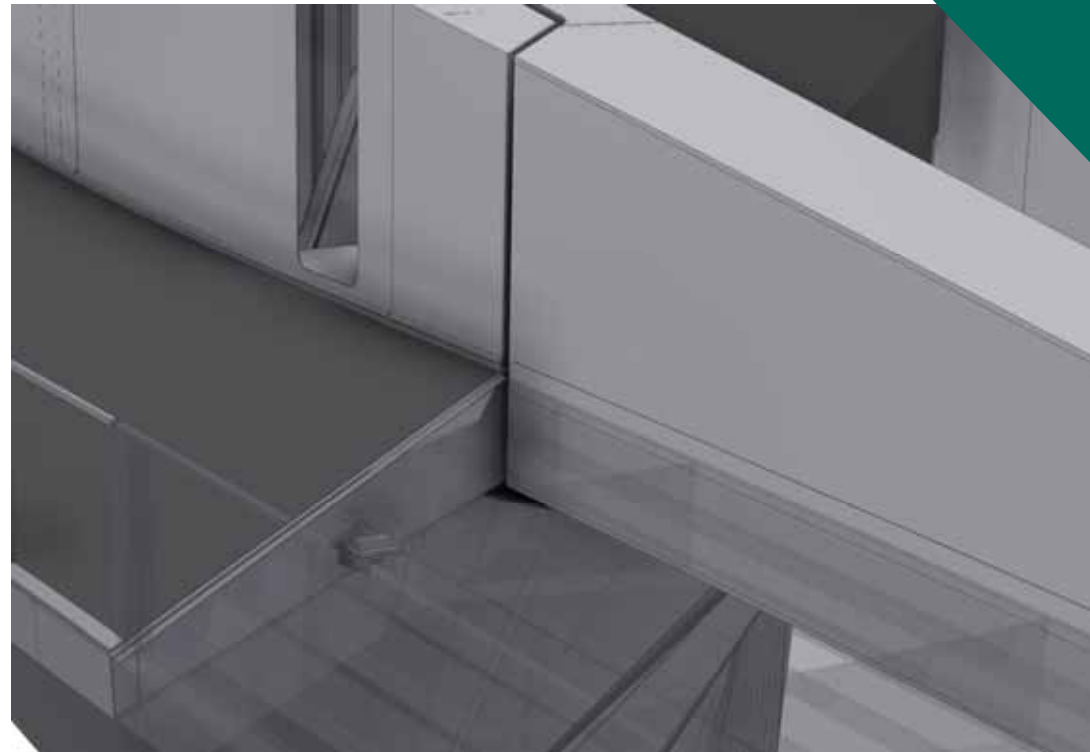
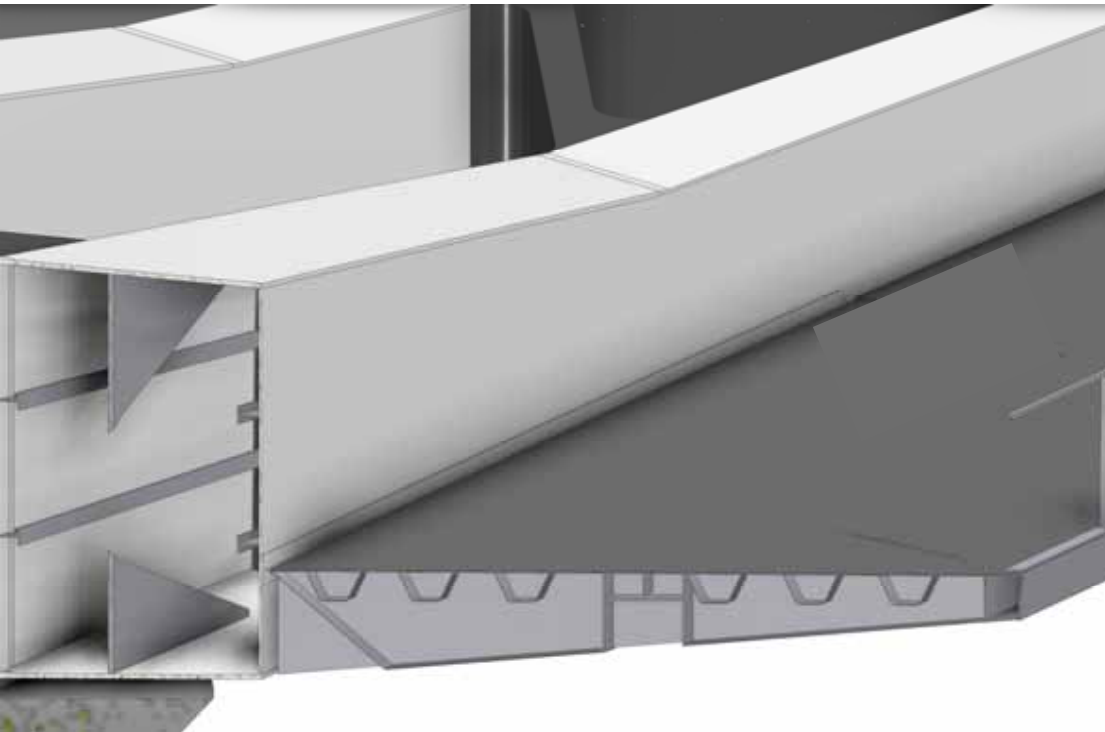
## BEWEEGBAAR DEEL – STALEN VAL



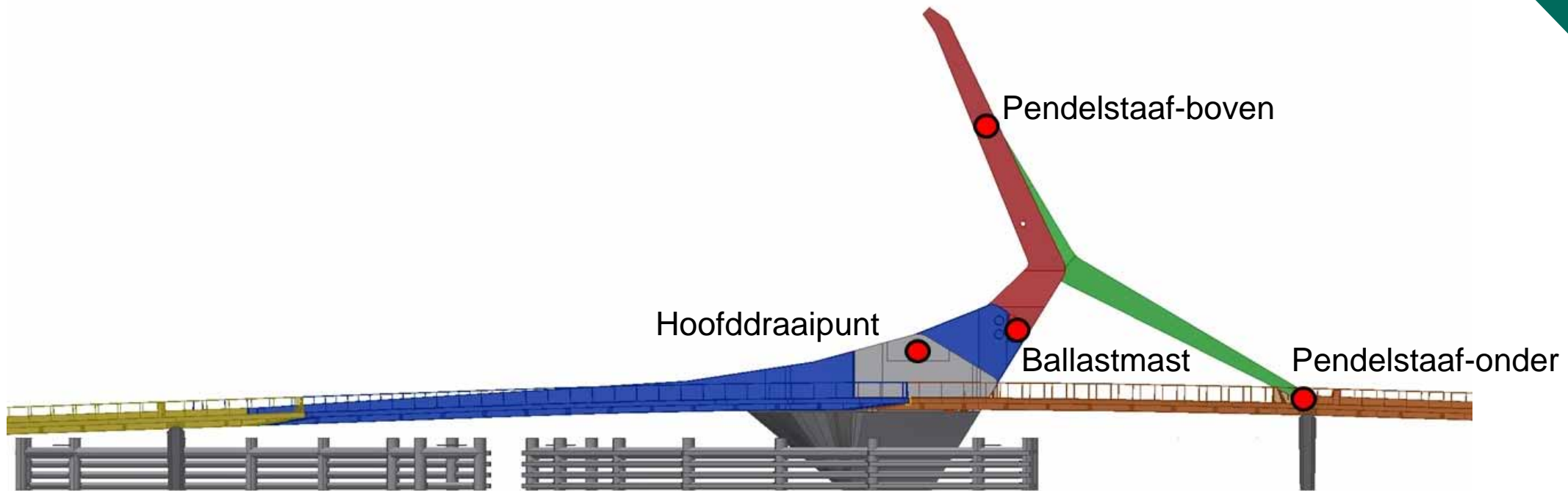
# BEWEEGBAAR DEEL – STALEN VAL



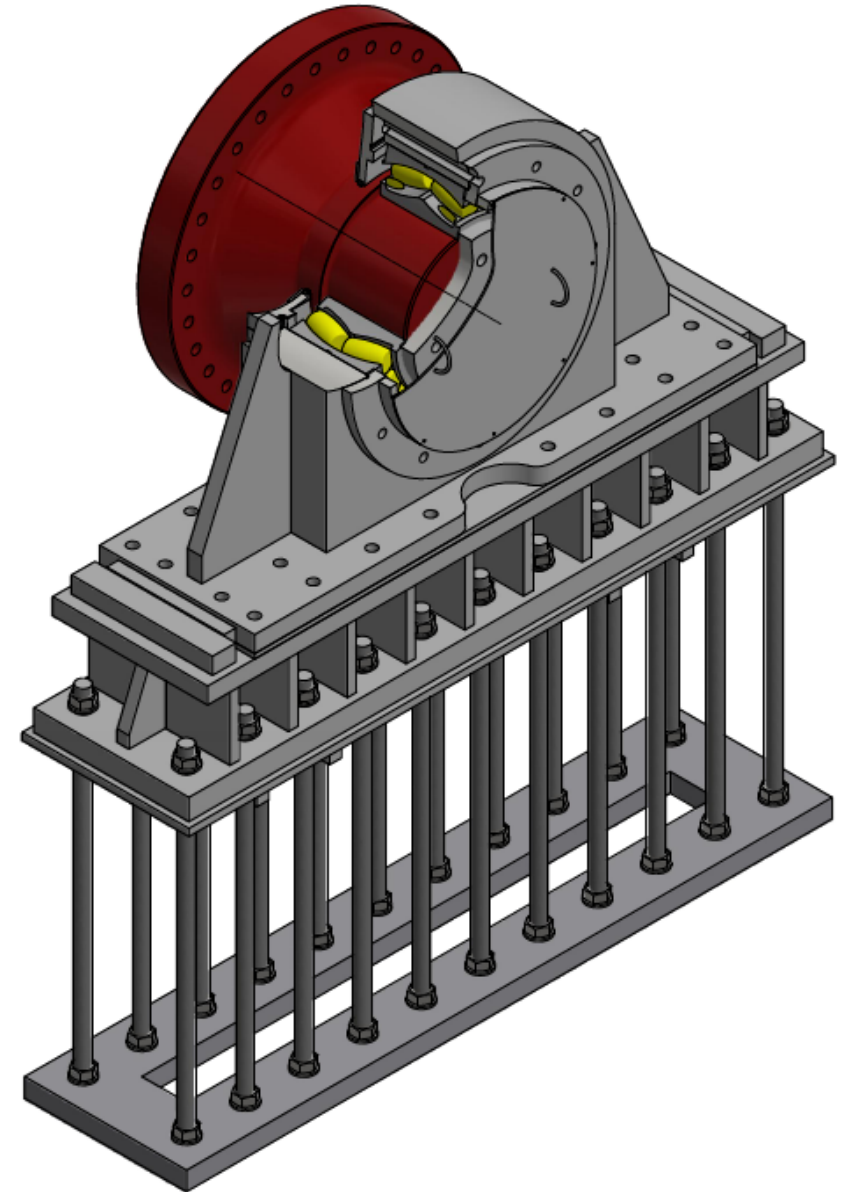
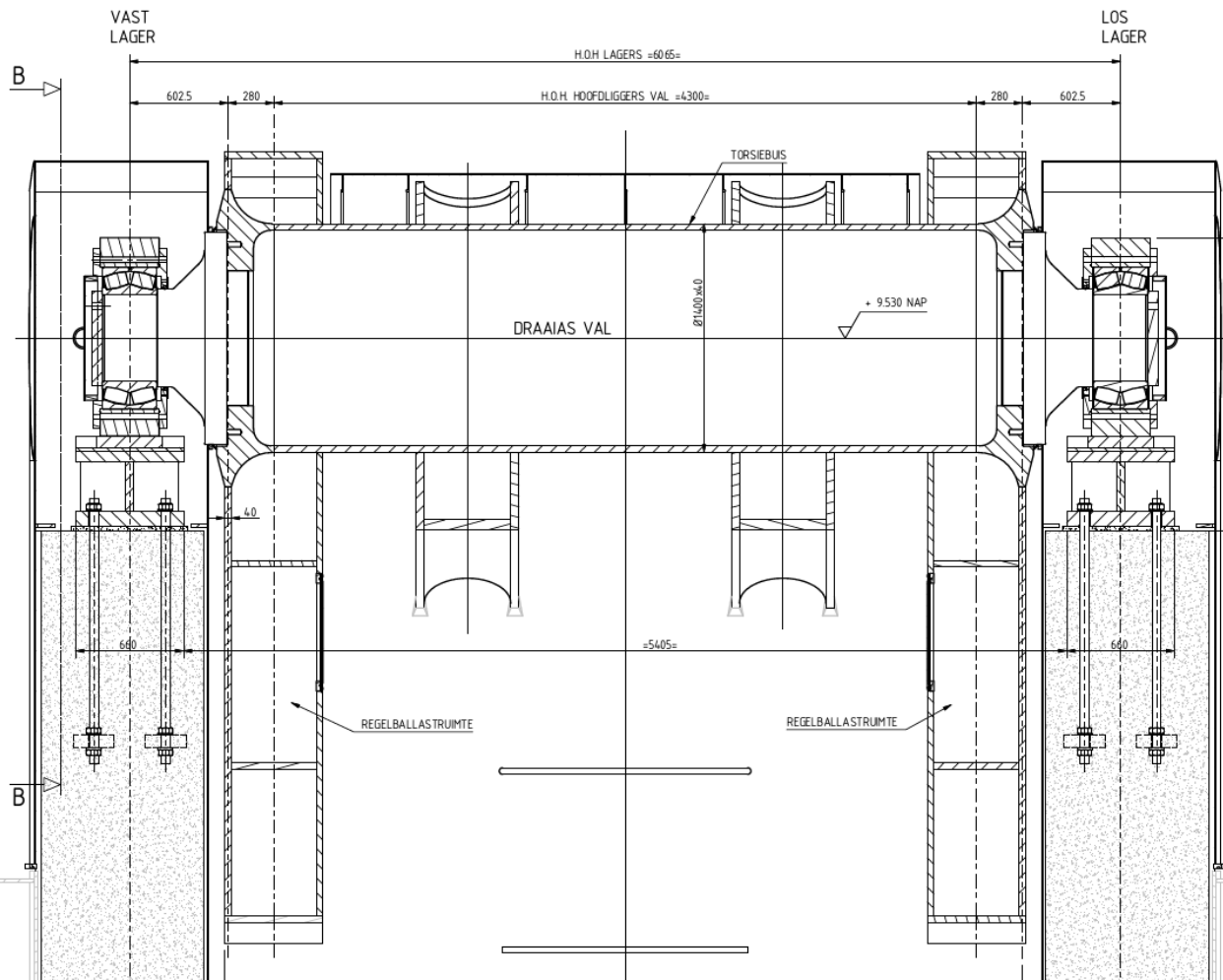
## DETAIL VAL – ACHTERHAR STEUNPUNT



## BEWEEGBAAR DEEL – OVERZICHT DRAAIPUNTEN

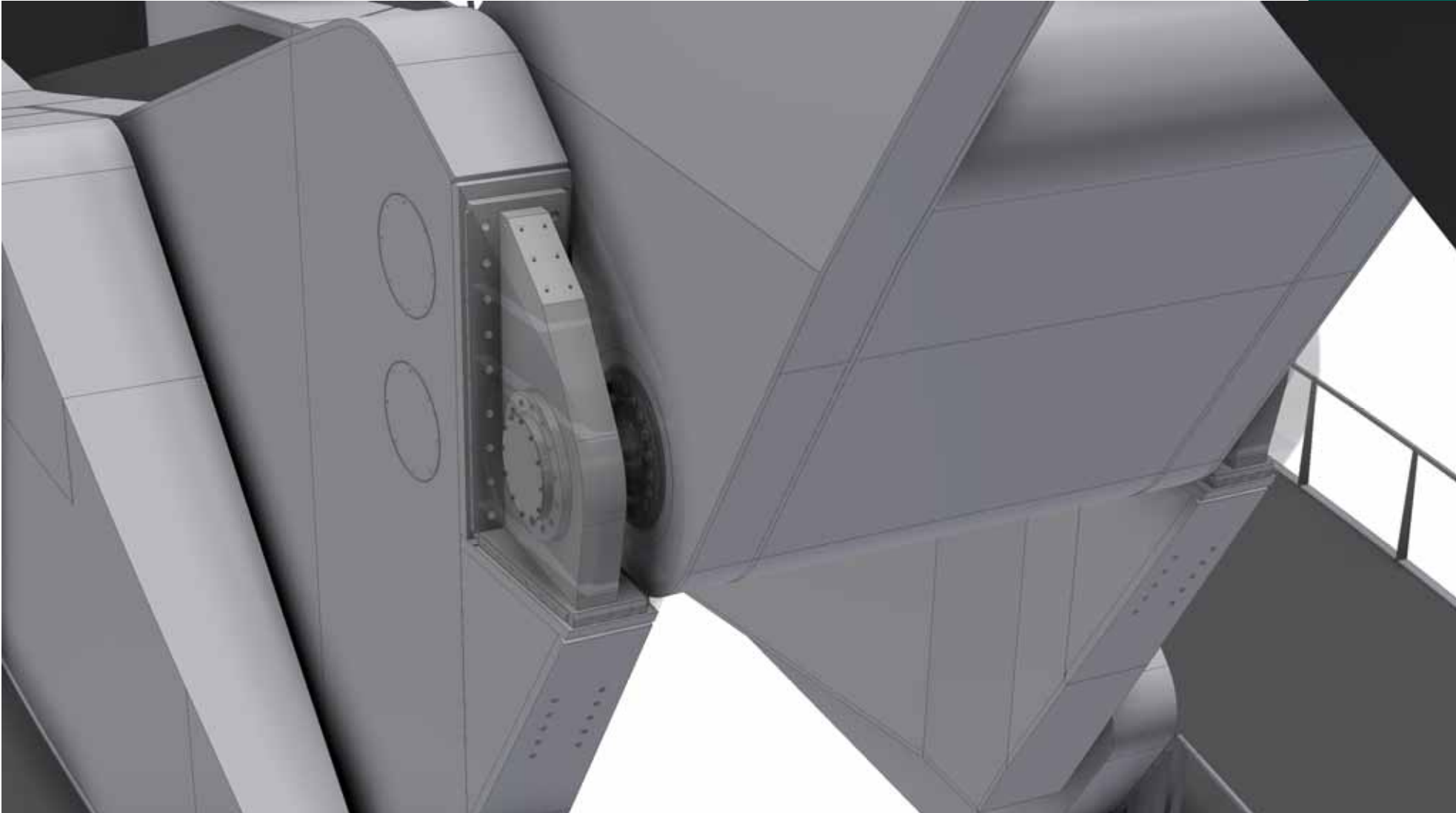


# HOOFDDRAAIPUNT

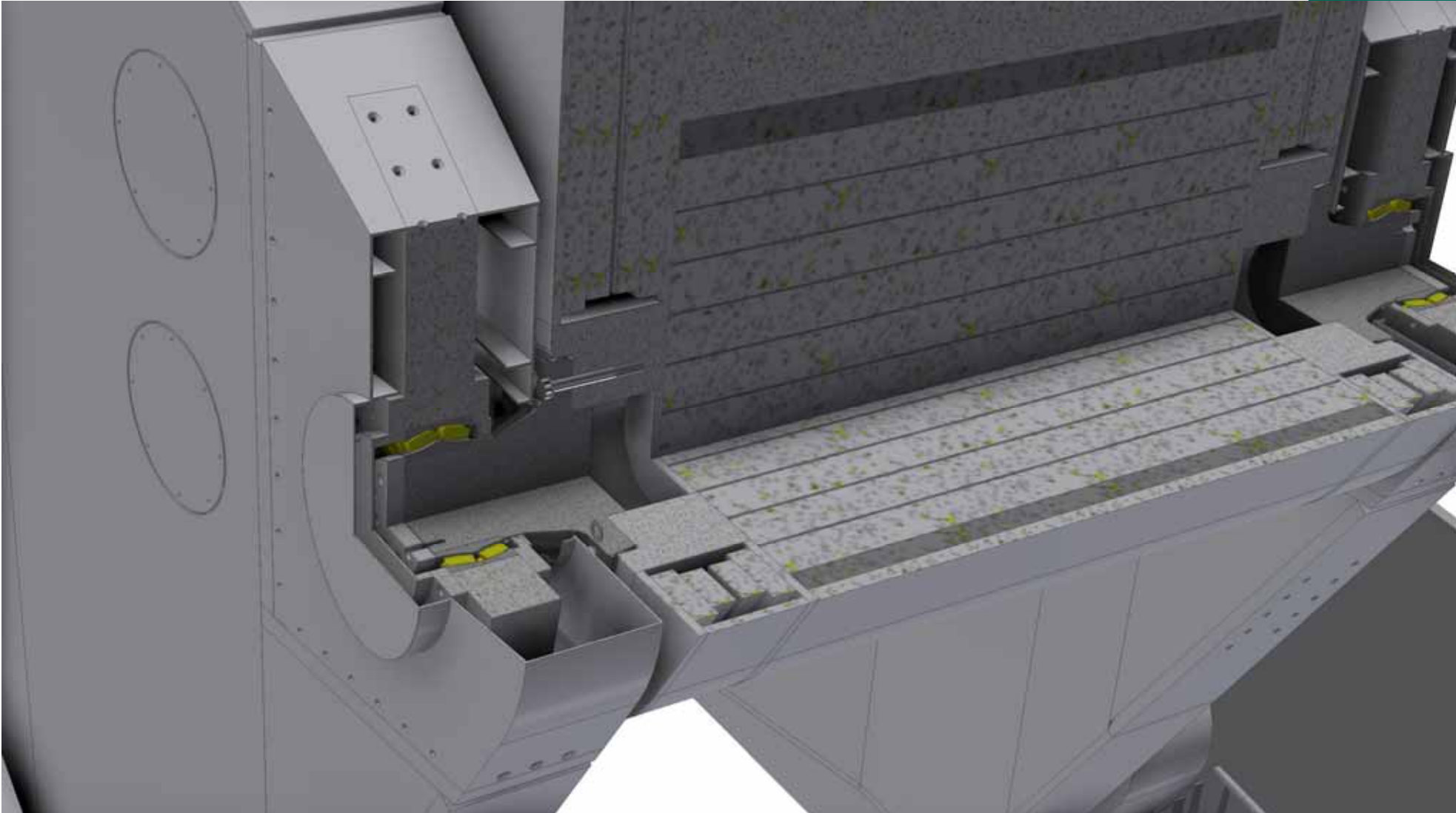




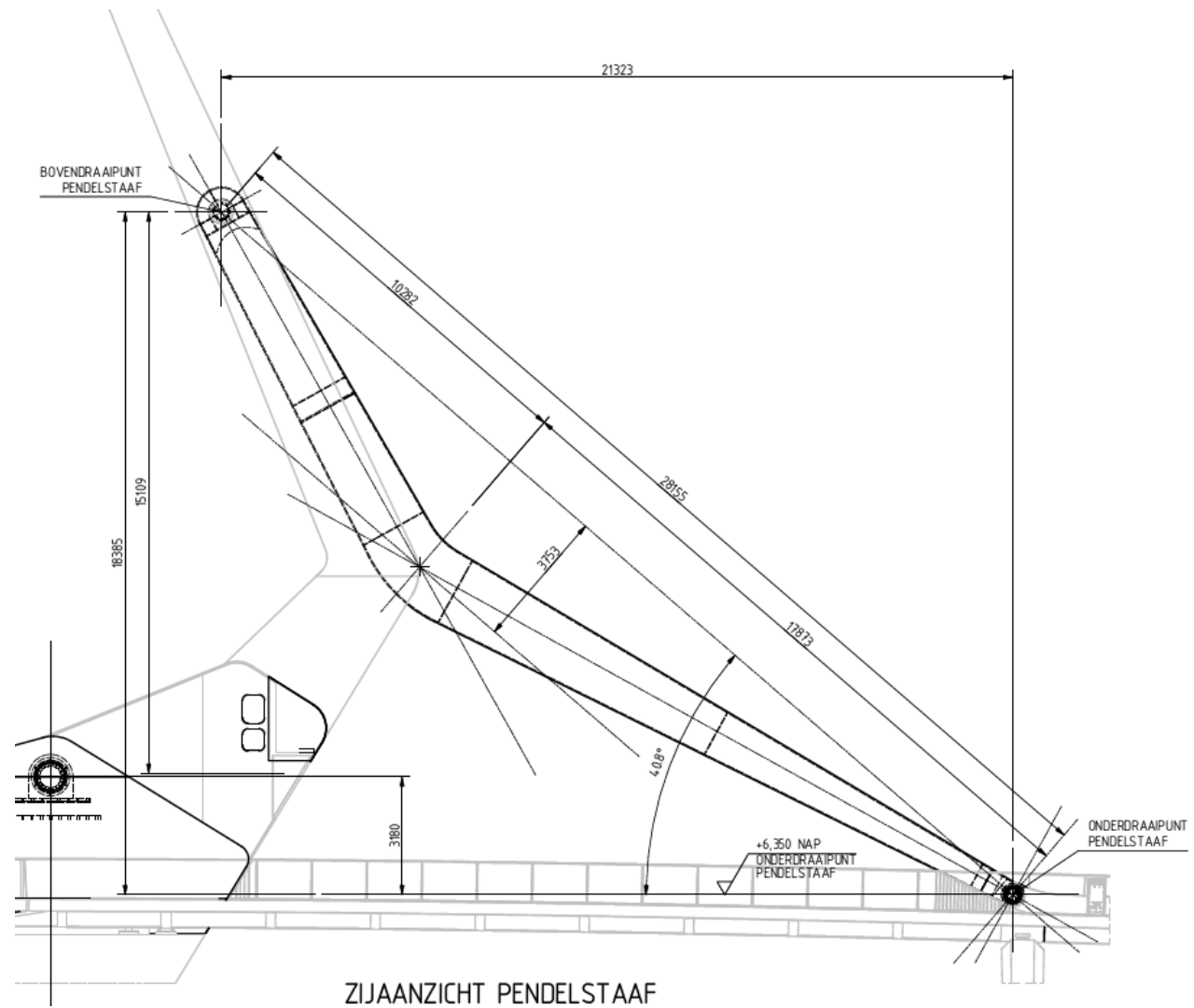
# DRAAIPUNT BALLASTMAST



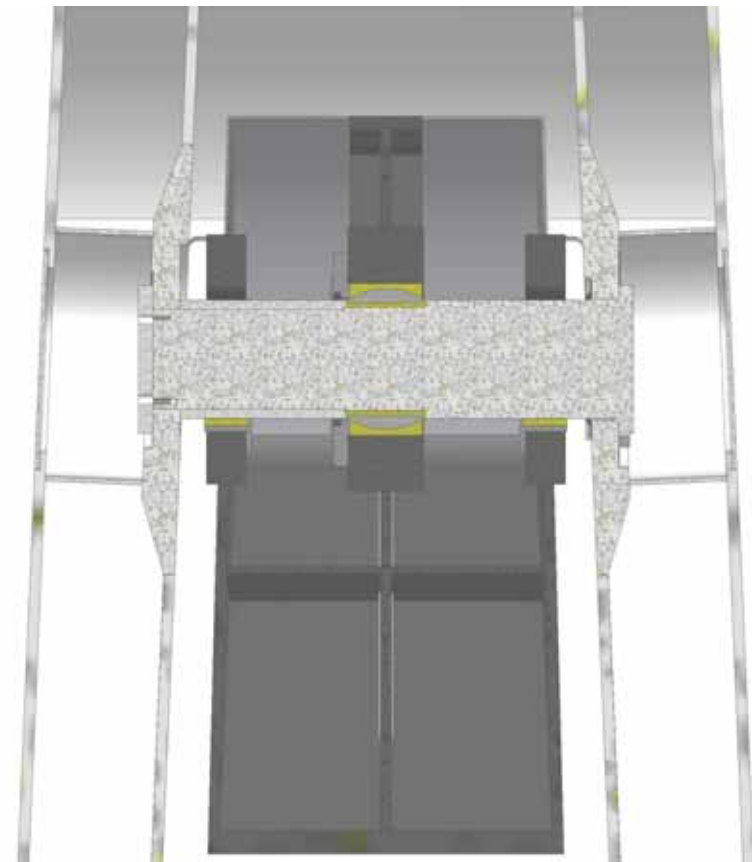
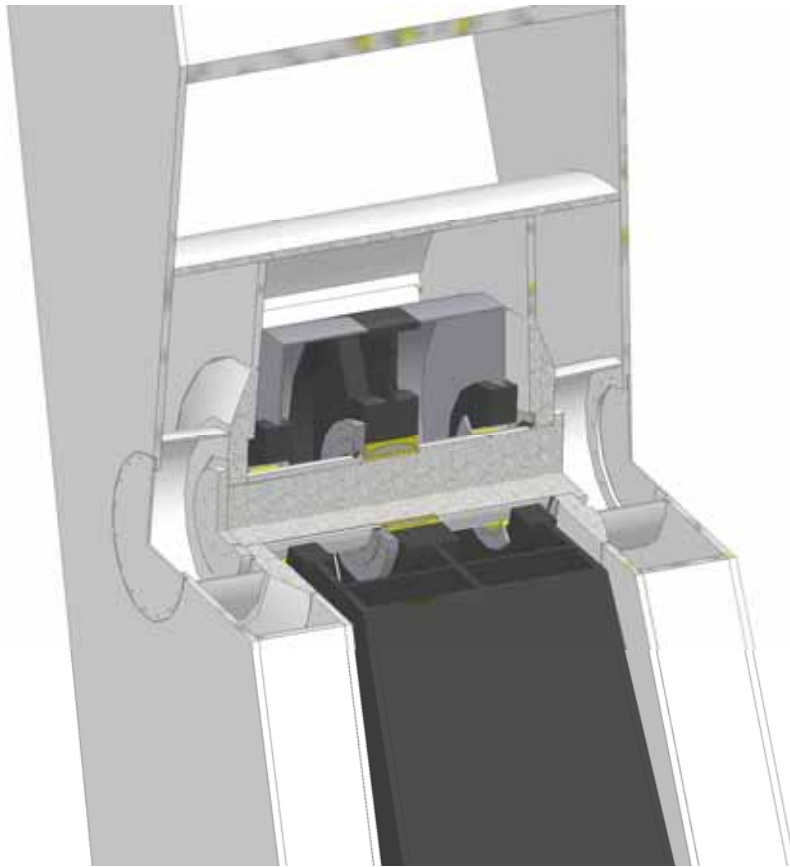
# DRAAIPUNT BALLASTMAST



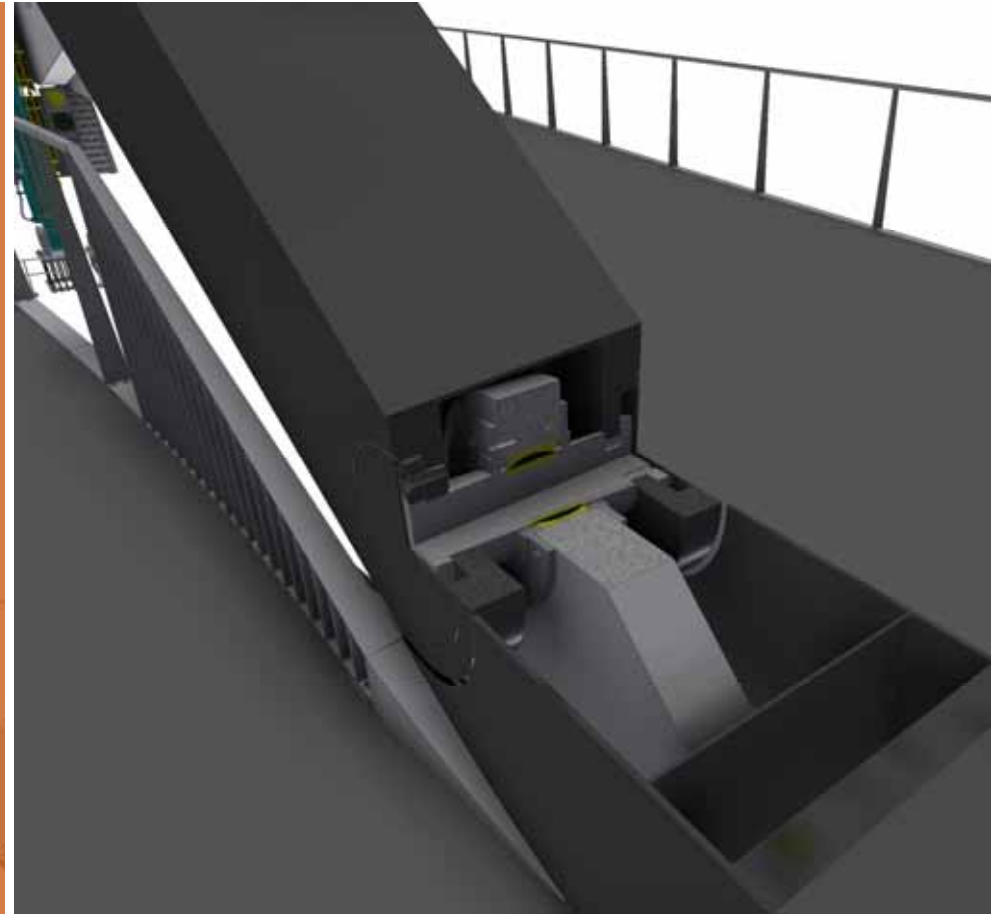
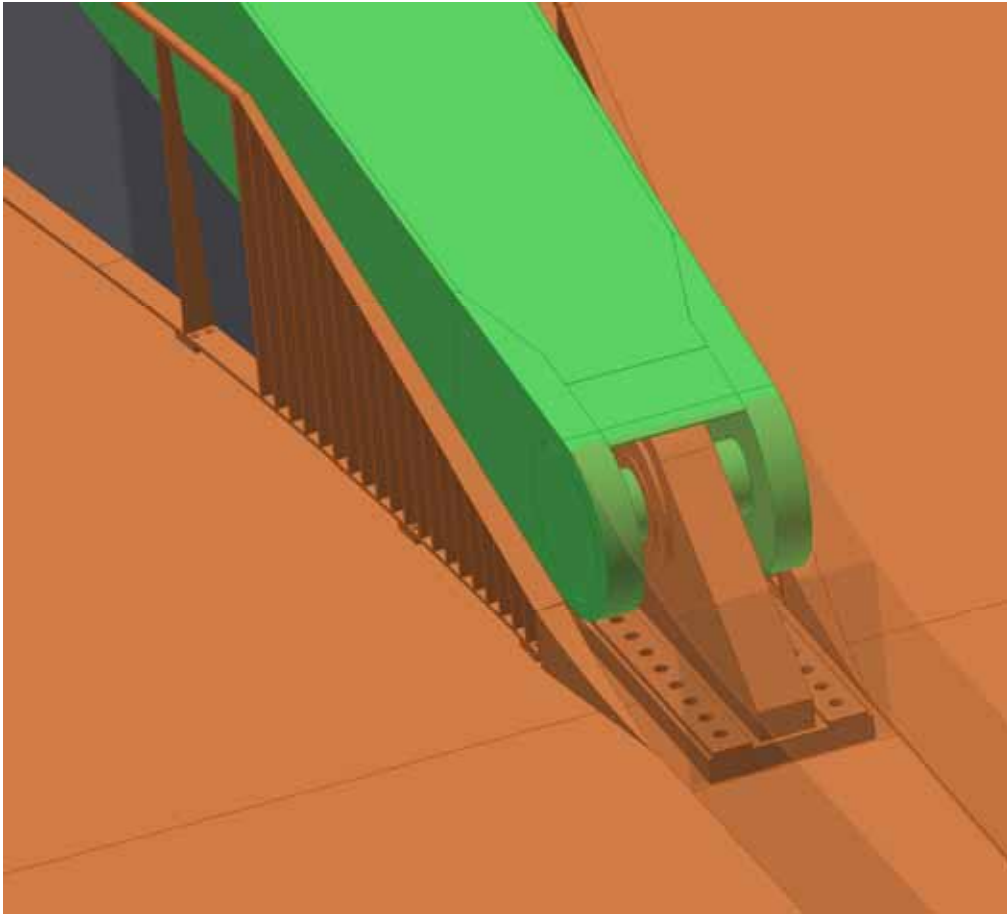
# PENDEL - DRAAIPUNTEN



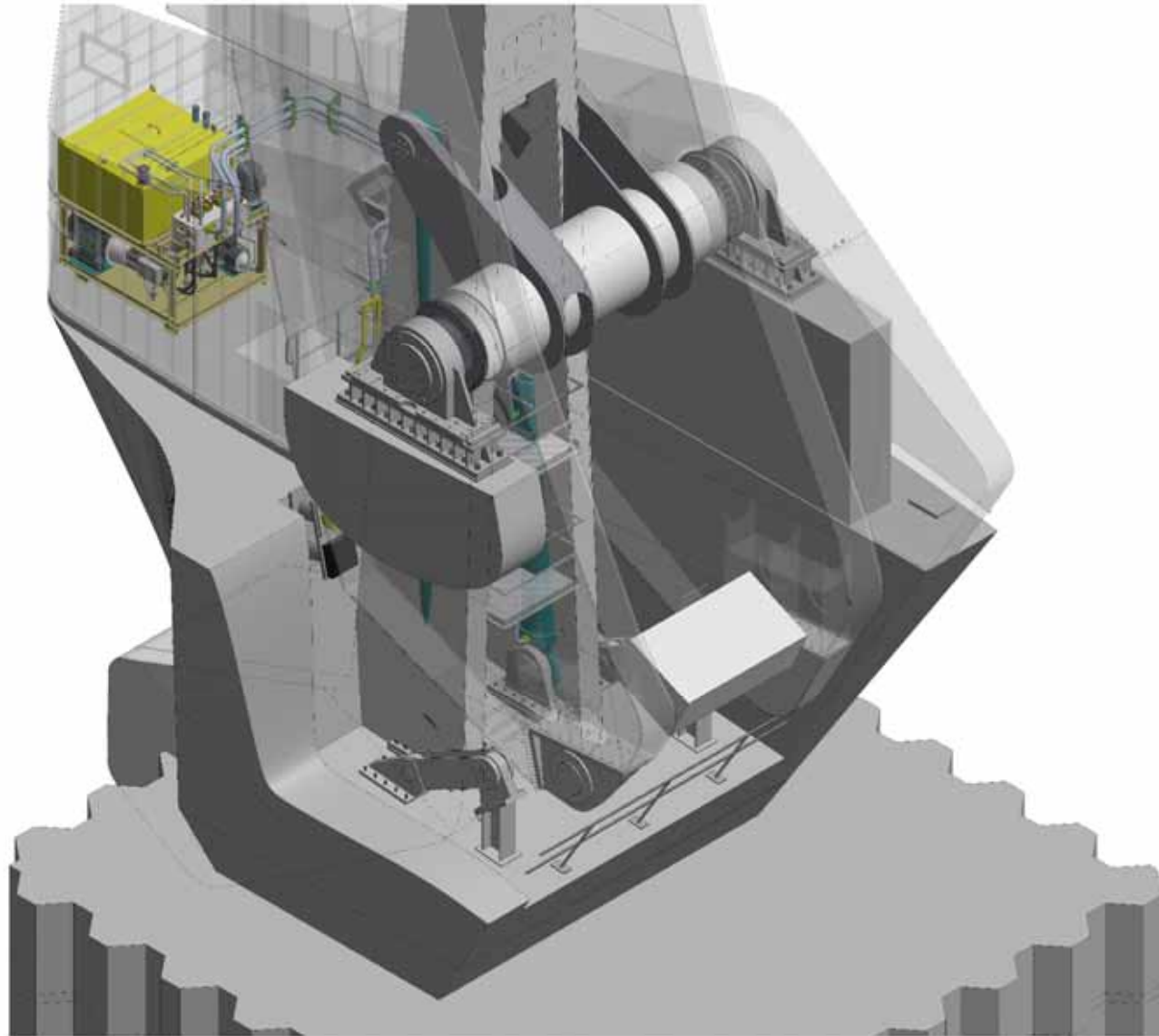
# BOVENDRAAIPUNT PENDEL



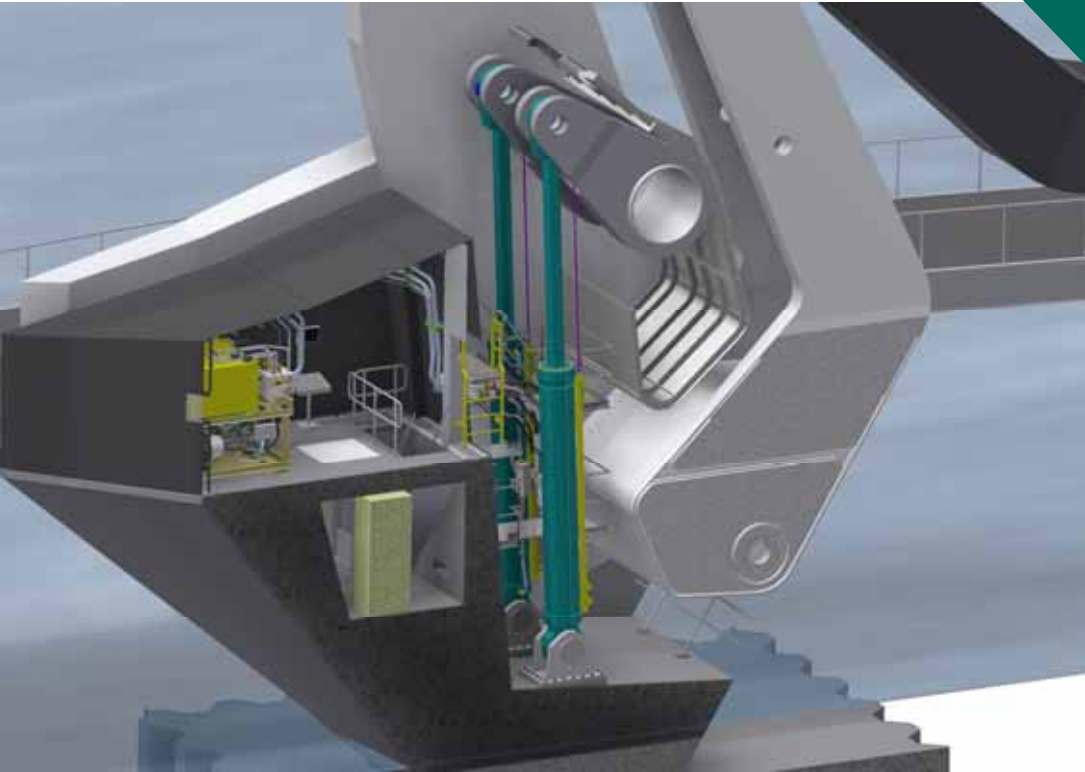
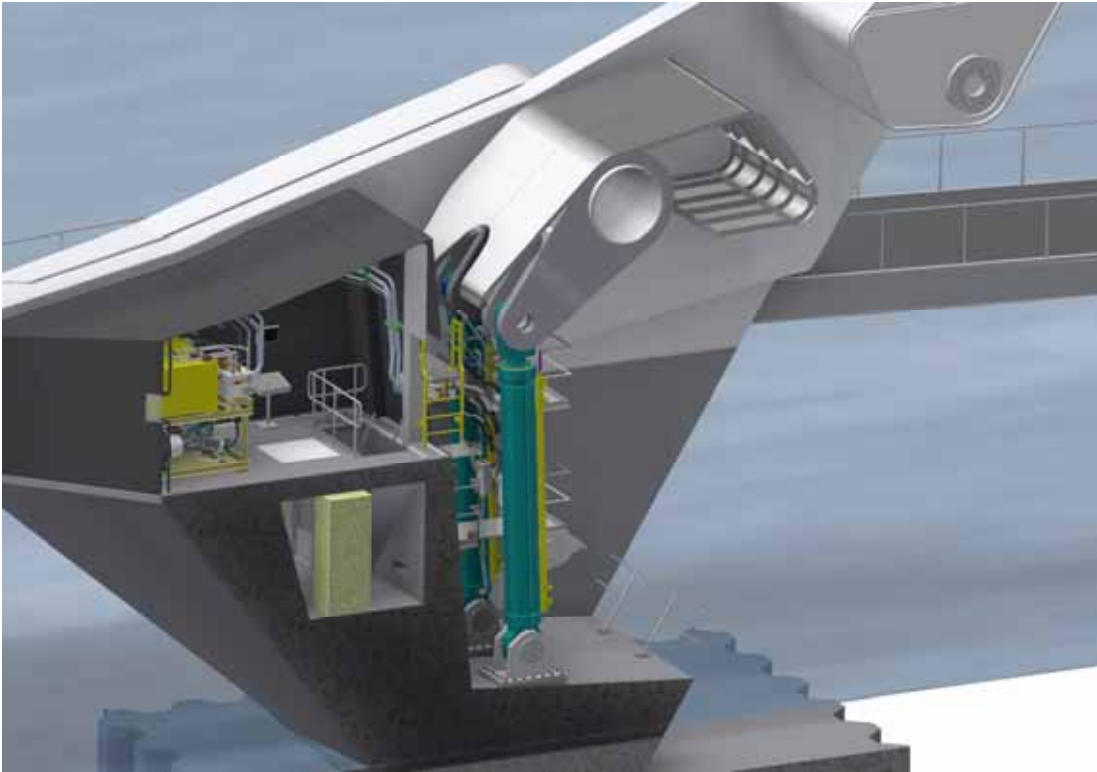
# ONDERDRAAIPUNT PENDEL



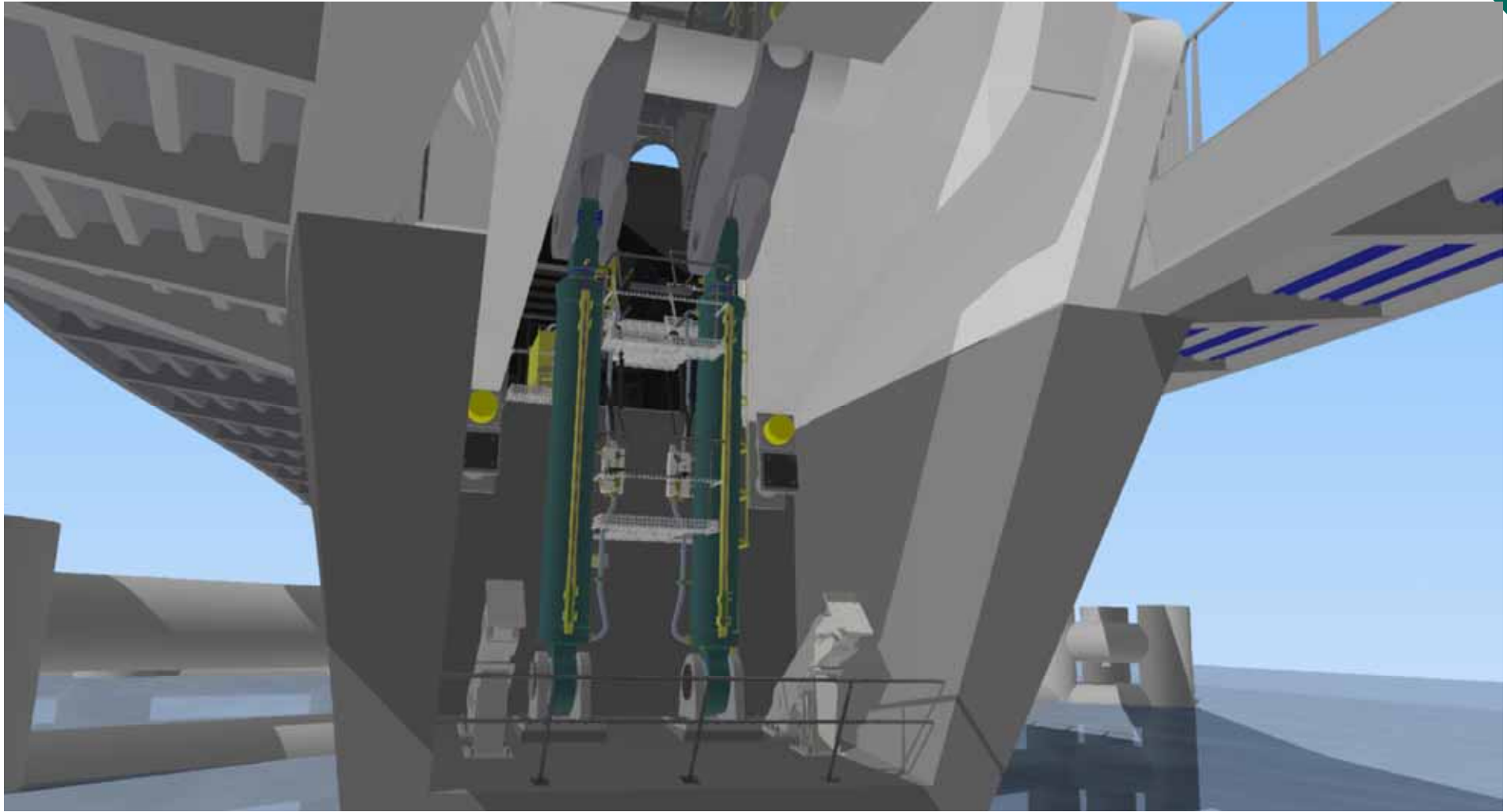
# MECHANISCHE UITRUSTING



# AANDRIJVING

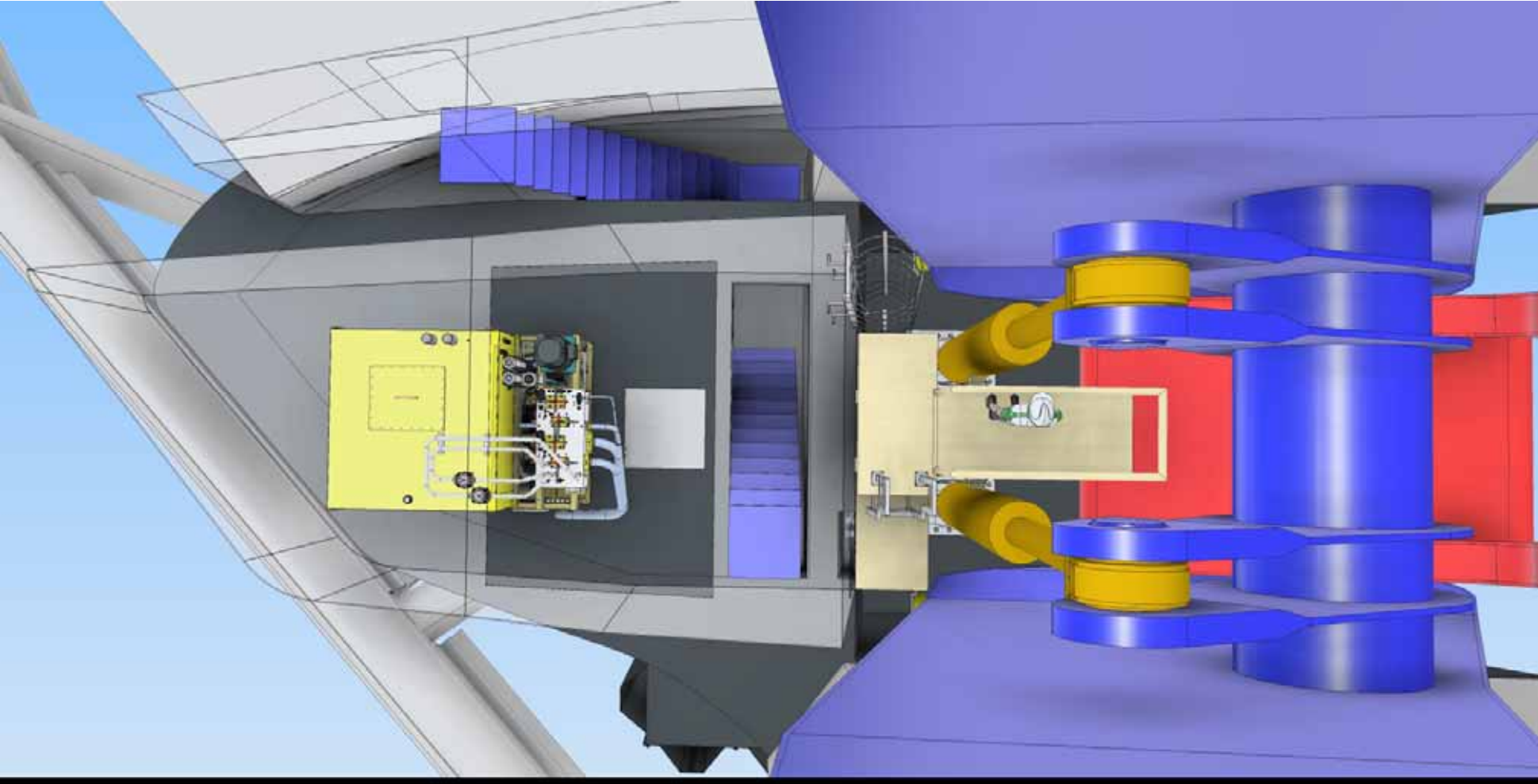


# CILINDERS

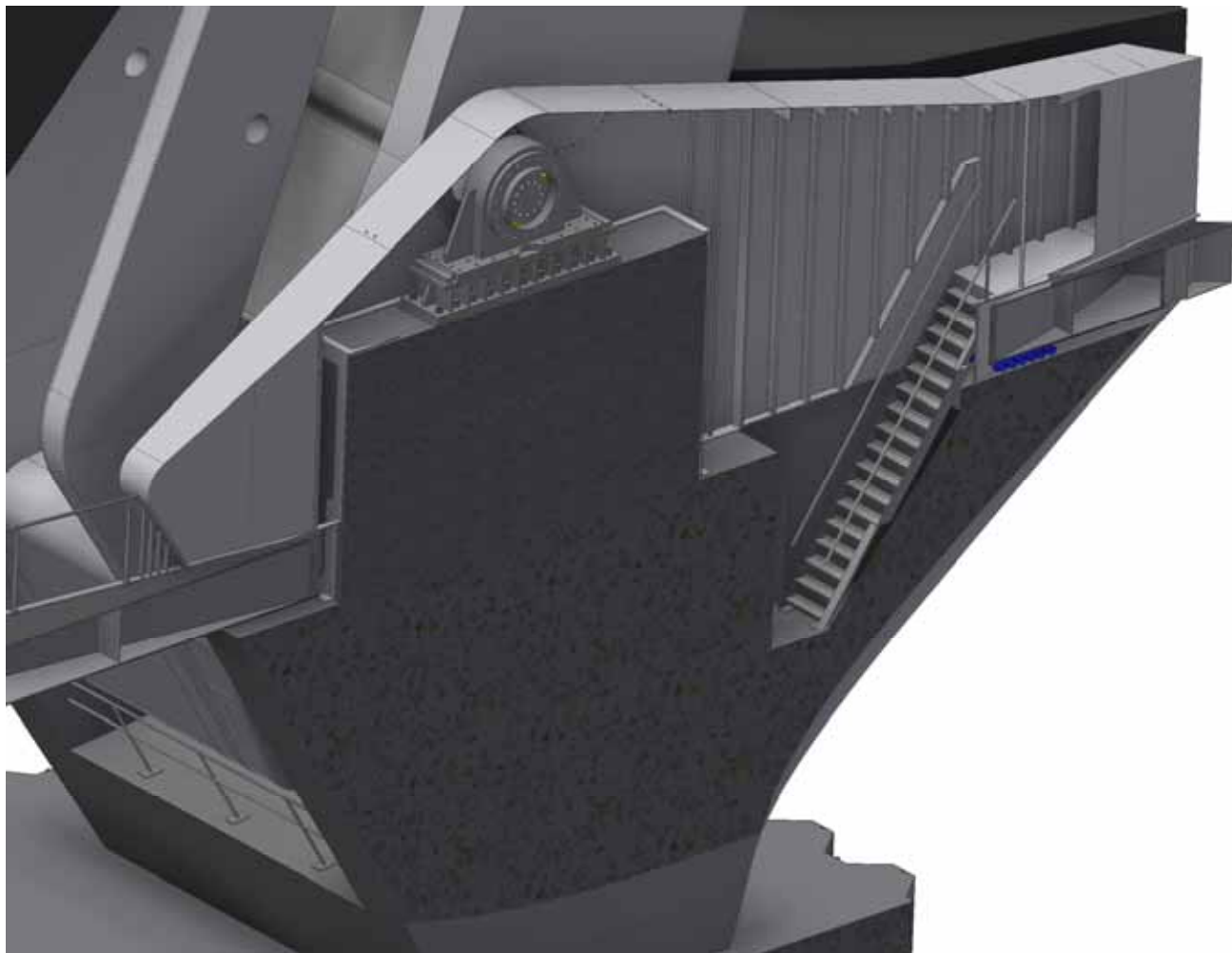




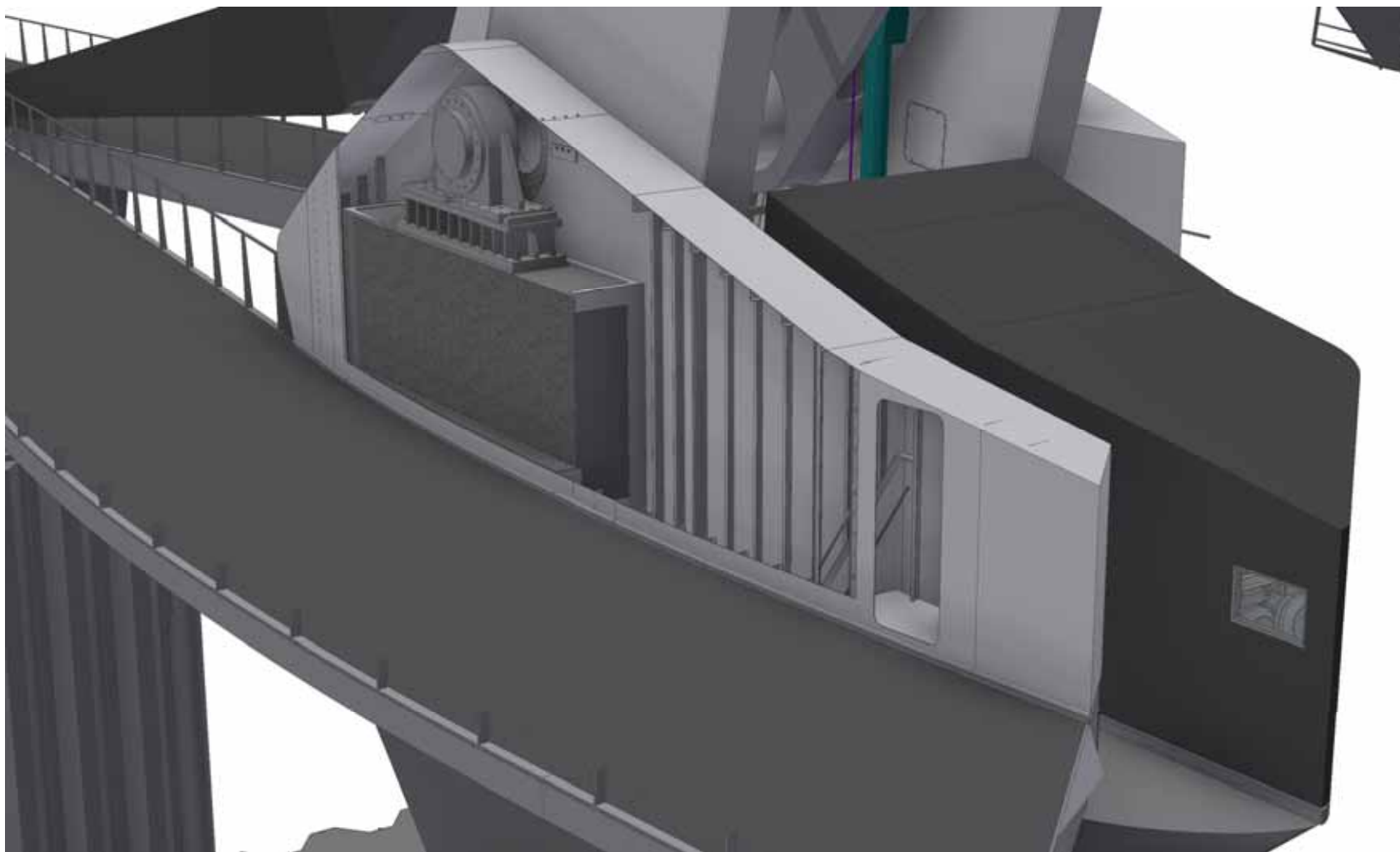
# TOEGANG KELDER



# TOEGANG KELDER



## TOEGANG KELDER



# DOORKIJK



- UO-Fase
- 2020 uitvoering
- 2021 Oplevering